



One Analytics Release Notes

November 2018

CAPITA

Revision History

Version	Published on
November 2018 - 1.0	30/11/2018

© Capita Business Services Ltd 2018. All rights reserved. No part of this publication may be reproduced, photocopied, stored on a retrieval system, translated or transmitted without the express written consent of the publisher. Microsoft® and Windows® are either registered trademarks or trademarks of Microsoft Corporation in the United States and/or other countries.

www.capita-one.co.uk

Contacting One Application Support

You can log a call with One Application Support via the Customer Service tool available on [My Account](#).

Providing Feedback on Documentation

We always welcome comments and feedback on the quality of our documentation including online help files and handbooks. If you have any comments on any aspect of our documentation, please email:

onepublications@capita.co.uk

Please ensure that you include the document name, version and aspect of documentation on which you are commenting.

Contents

Document Purpose	1
Upgrading the Software	2
Compatibility with Capita One	2
Compatibility with Tableau	2
Software Distribution	2
Changes in the New Release	3
Updated Data Sources.....	3
Resolved Issues	8

Document Purpose

These release notes are provided to users to detail the enhancements and resolutions included with the One Analytics November 2018 release. Each release contains all fixes and enhancements issued since the previous release. Instructions for downloading the latest release installation media are also included.

Should you have any questions about the implementation, testing, or user impacts of the changes listed in this document, please contact:

Product Manager: Munn-Tzin Bong

Phone: 07912 975778

Email: Munn-Tzin.Bong@capita.co.uk

Upgrading the Software

Compatibility with Capita One

The One Analytics November 2018 release is designed to be compatible with the following versions of the Capita One system:

- 3.65
- 3.66
- 3.67

If you are running an older version of Capita One, we recommend that you upgrade to at least the 3.65 release prior to installing this update.

Compatibility with Tableau

The One Analytics November 2018 release is designed to be compatible with Tableau 10.5.

If you have not upgraded the Tableau components of One Analytics to Tableau 10.5 (included as part of the March 2018 release), you must do so as part of this upgrade. The Tableau 10.5 download link and password are available from the One Analytics November 2018 My Account posting:

<https://myaccount.capita-cs.co.uk/Notifications/capita-one-analytics-September-2018-release/>

Software Distribution

The One Analytics November 2018 release is available as a download only. Links to the self-extracting installation files are included below. One Co-ordinators will be emailed with the password to enable them to unzip the installation media.

The installation files for the One Analytics November 2018 release are available via the following link:

<http://dl.capitasolus.co.uk/onedownloads/OA-2018-Nov.exe>

Changes in the New Release

Updated Data Sources

The following data sources have been updated in this release:

- CSS Involvement & Comms Log
- SEN, Provision & Comms Log

The changes are documented in the sections below.

New Functionality: Tableau Calculated Fields migrate to the Data Warehouse

Calculated Fields migration to One Analytics Data Warehouse

A number of data sources have extensively used Calculated Fields within the Tableau part of One Analytics to evaluate information so that it can be further analysed within visualisations. As a result, these CF's can have an impact on the performance of visualisations and to that end where possible, these calculated fields are being migrated to the One Analytics Data Warehouse.

Where Calculated Fields have been migrated, they have been deleted from the Data Source and so if they have been used within workbooks the references to these fields will need to be replaced, which is documented in section '*How to fix up workbooks referencing deleted calculated fields*'.

The focus of the November release was the SEN, Provision & Comms Log Data Source, and the fields which have been migrated are listed below and where they can be found within the model.

Note: Where the calculated field is listed in the table below this means it has either been replaced with a respective Data Warehouse column or removed for the reason stated in the 'Additional Information' column.

DS Calculated Field Name	Replacement DW Field Name	DS Folder	Additional Information
No. Weeks To Complete Assessment (AD)	N/A	N/A	Calculated field was a duplicate of field 'Weeks Taken to Complete Assessment' which has been replaced by a DW field.
No. Weeks To Complete Statement / Plan (AD)	Total Weeks To Complete Statement / Plan (AD)	Assessment - Detail (AD)	
Assessment Has Any Exceptions	No name change		
NCY - At assessment request date (Student - Detail)	No name change		
NCY - At assessment request date (Student - Detail)	No name change	Student - Detail	
NCY (inc Offset) - At assessment request date (Student - Detail)	No name change		
CLA at or prior to SEND \ EHCP Assessment (Student - Flags)	CLA prior to SEND \ EHCP Assessment (Student - Flags)	Student - Flags	The calculation has been updated to only validate if the Student had a CLA record prior to the assessment.
CLA at time of SEND \ EHCP Assessment (Student - Flags)	No name change		
Assessment Has Any Exceptions	Assessment Has Exceptions	Assessment – Flags	

Changes in the New Release

Assessment Tribunal	Assessment Has Tribunal				
Upcoming Review In 6 Weeks	Has Review In 6 Weeks				
Assessment Mediation	Assessment Has Mediation				
Current Phase	No field name change	Assessment Progress – Detail			
Weeks Taken to Complete Draft EHCP/Statement					
Weeks Taken to Complete Final EHCP/Statement					
Days Taken to Complete Draft EHCP/Statement'	Days to Complete Draft EHCP/Statement				
Days Taken to Complete the Final EHCP/Statement	Days to Complete Final EHCP/Statement				
Weeks Taken for Assessment Decision	Weeks for Assessment Decision				
Weeks Taken to Complete Assessment	Weeks to Complete Assessment				
Days Taken for Assessment Decision	Days for Assessment Decision				
Days Taken to Complete Assessment	Days to Complete Assessment				
EHCP - Phase 1 - Days until Decision Due Date	No field name change		Business logic updated to use the EHCP default values as setup within One Education UI root Focus Services EHCP Administration EHCP Configuration and no longer parameters within the Data Source as these have been removed.		
EHCP - Phase 2a - Days until Assessment Due Date					
EHCP - Phase 2b - Draft EHCP Due Date					
EHCP - Phase 3 - Final EHCP Due Date					
Statement - Phase 1 - Decision Due Date					
Statement - Phase 2 - Assessment Due Date					
Statement - Phase 3a - Proposed Statement Due Date					
Statement - Phase 3b - Final Statement Due Date					
EHCP - Phase 1 - Decision Due Date		No name change		Assessment - Dates	Business logic updated to use the EHCP default values as setup within One Education UI root Focus Services EHCP Administration EHCP Configuration and no longer parameters within the Data Source as these have been removed.
EHCP - Phase 2a - Assessment Due Date					
EHCP - Phase 2b - Draft EHCP Due Date					
EHCP - Phase 3 - Final EHCP Due Date					
Statement - Phase 1 - Decision Due Date					
Statement - Phase 2 - Assessment Due Date					
Statement - Phase 2 - Assessment Due Date					
Statement - Phase 3a - Proposed Statement Due Date					
Statement - Phase 3b - Final Statement Due Date					
Statement - Phase 3b - Final Statement Due Date					

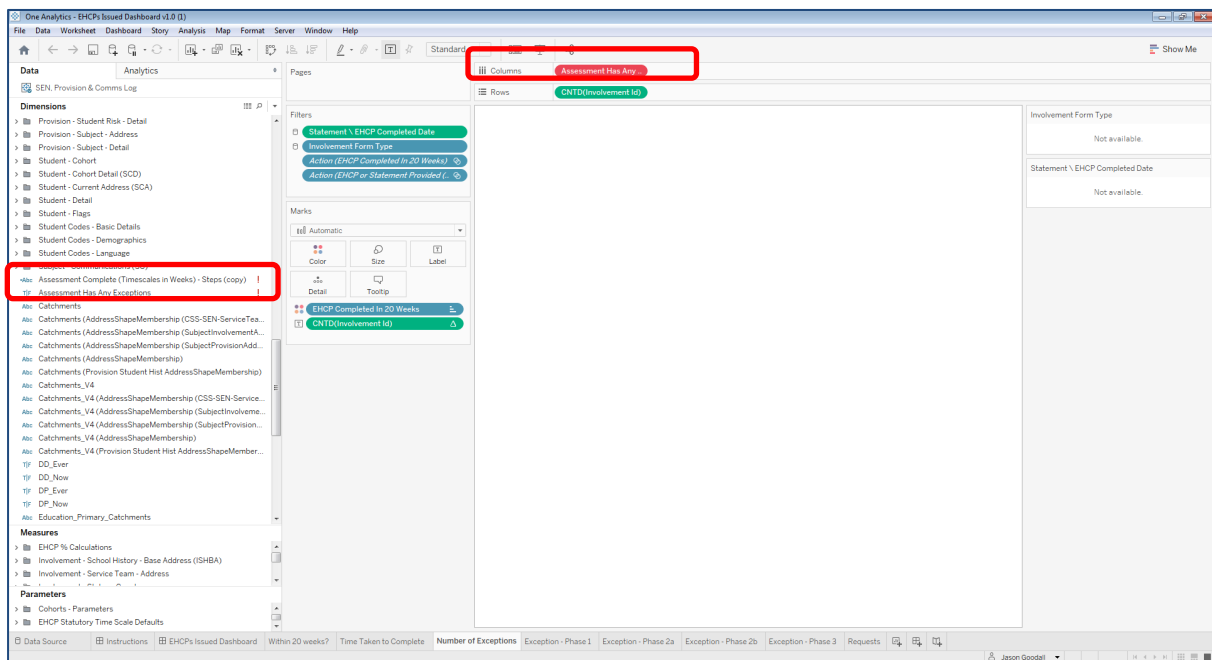
Current Active Caseworker (IC)	Active Caseworker (IC)	Involvement - Caseworker (IC)	
Currently At a Placement	Currently at Placement (PTDB)	P or T - Placement or Transfer To - Base - Detail (PTDB)	

The **CSS, Involvements & Comms log** has been affected by the change made for one field as noted below.

DS Calculated Field Name	Replacement DW Field Name	DS Folder	Additional Information
Current Active Caseworker (IC)	Active Caseworker (IC)	Involvement - Caseworker (IC)	

How to fix up workbooks referencing deleted calculated fields

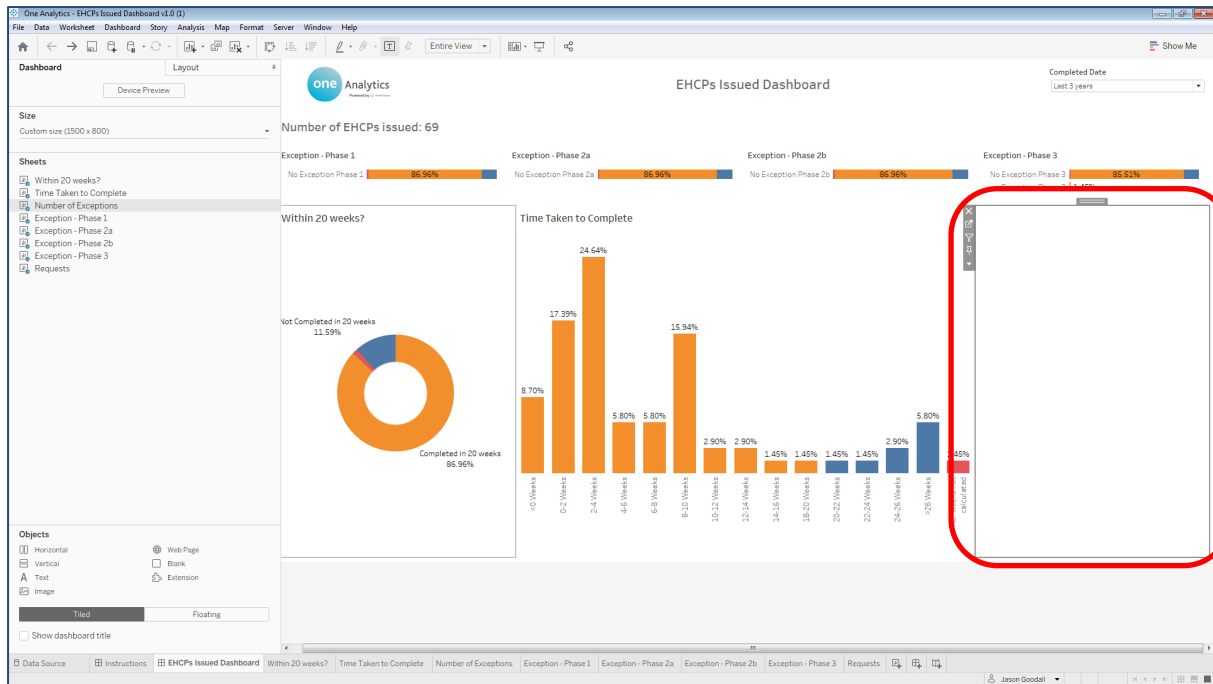
If there are workbooks which have used the deleted calculated fields the below screen shot displays how this would look. To resolve the issue the field will need to have the references replaced which is further documented below.



As can be seen in this visualisation field 'Assessment Has Any Exceptions' is showing in a red colour meaning it is invalid and, in this instance, it is because the calculated field has been deleted from the Data Source. Additionally, in the 'Dimensions' panel the field is not showing within a folder and has an exclamation icon next to it.

Where the visualisations have been used in a dashboard, there will be blank white space where the visualisation was placed, as noted above this is because there is now an invalid field and the viz cannot be drawn.

Changes in the New Release



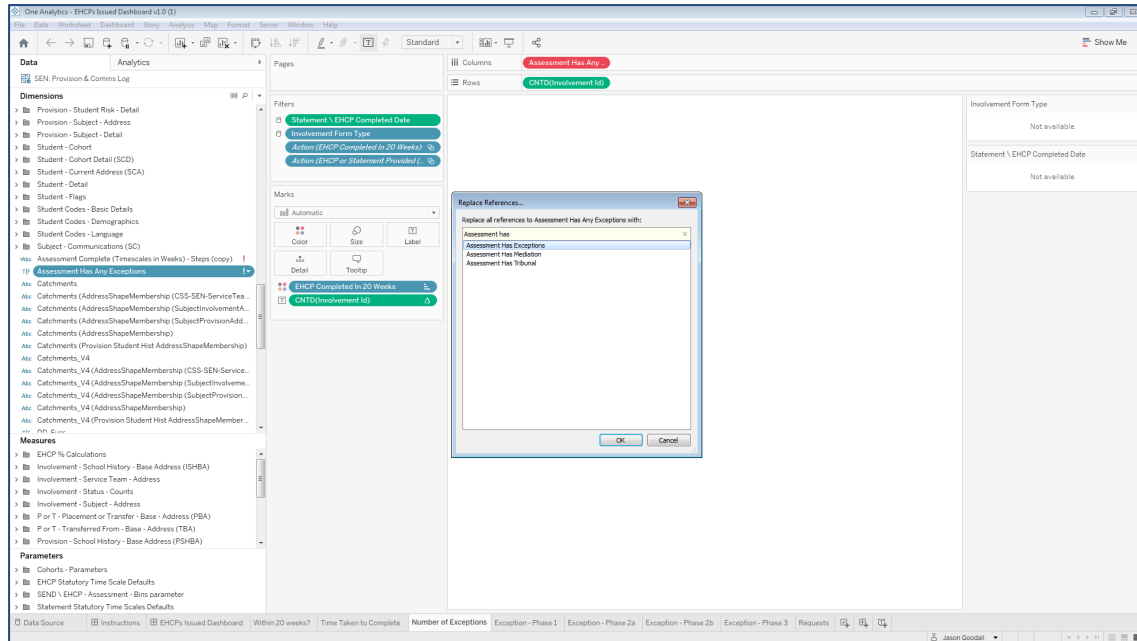
To correct any affected visualisations please follow the documented steps below.

1. Right click on the invalid calculated field and select 'Replace References'.

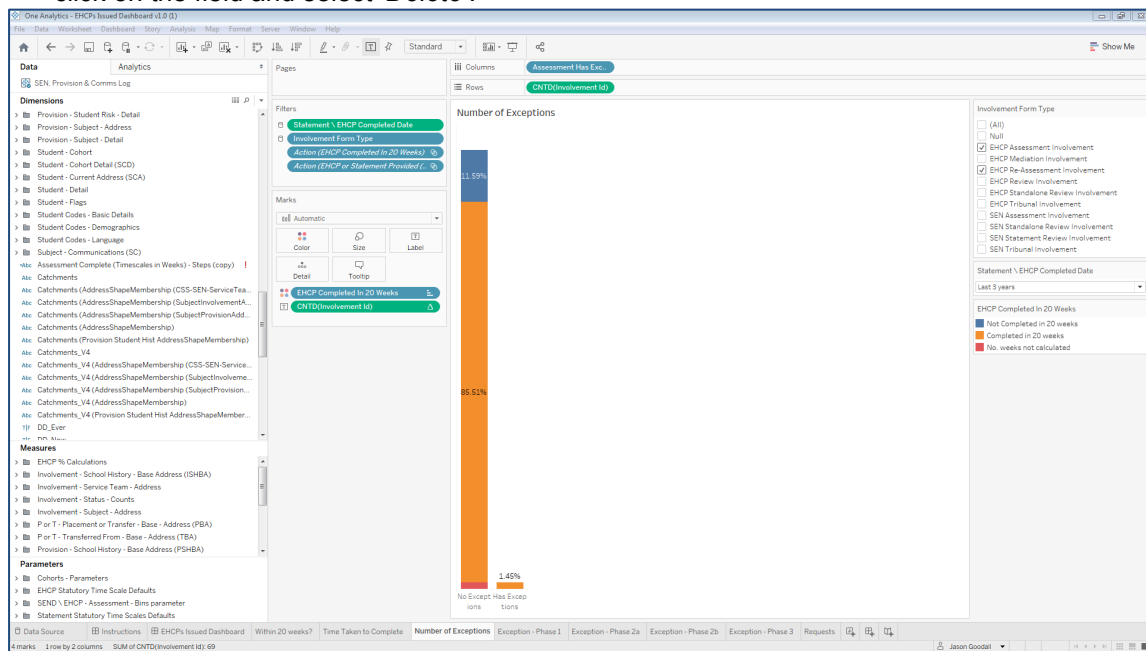
The 'Replace References' dialog box shows the following list of fields:

- % With EHCP Completed in 20 Weeks
- % With Statement Completed in 20 Weeks
- Active Case Count
- Active Case Count
- Actual Provision Cost (PCD)
- Additional Medical Need Code (AMN)
- Additional Medical Need Description (AMP)
- Additional SEN Need Code (ASN)
- Additional SEN Need Description (ASD)
- Address County (Involvement - School History - Base Address)
- Address County (Involvement - Service Team - Address)
- Address County (Involvement - Subject - Address)
- Address County (PBA)
- Address County (Provision - School History - Base Address)
- Address County (Provision - Subject - Address)
- Address County (SCA)
- Address County (TBA)
- Address County (PBA)
- Address ID (PBA)
- Address ID (SCA)
- Address LA Name (SCA)

2. Find the field which has replaced the calculated field using the table provided above, in this case field 'Assessment Has Exception' has replaced the calculated field, then select 'OK'.



- One Analytics Tableau will now, as the option suggests, replace any references of the invalid field to the field selected and correct the visualisation to be appropriately displayed. The invalid field may also be removed from the workbook at this point. If it is not, then right click on the field and select 'Delete'.



If the content has been published and therefore is accessible via One Analytics Server, then at this point it would be necessary to re-publish the Workbook to ensure it can be viewed online without any issues.

Script required to ensure Assessment Progress & Dates fields are populated for deleted assessments

Once the November 2018 release has been successfully deployed and the 'All ETLs' job processed, the Assessment Progress and Relative Date fields will not be populated for records which have been deleted from One Education but still exist within One Analytics.

To ensure the values are correctly populated there is the need to process SQL script '*Populate_Assessment_Progress_For_Deleted_Assessments.sql*' manually. Please follow the instructions below to ensure values are populated for these records.

Note: *We advise this process is executed by a SQL DBA and that adequate backups have been taken.*

The script noted in the steps below will exist within folder location 'SQL Scripts\Release Scripts' for where One Analytics has been deployed and should be processed against the One Analytics Data Warehouse. E.G. C:\One Analytics\SQL Scripts\Release Scripts'

1. Open SQL Management Studio and connect to the One Analytics Data Warehouse.
2. Open sql file '*Populate_Assessment_Progress_For_Deleted_Assessments.sql*' from the install location of One Analytics and execute the script.

The output of processing the SQL will state how many records have been updated. Where message '*SEN_Configuration Staging table has no records, please run "OA - CSS & SEND" ETL job before executing this script.*' Is displayed, then please run as requested the 'OA – CSS & SEND' ETL job before processing then script.

Resolved Issues

Involvement 'Primary Reason' field not correctly updated

The 'Involvement Reason' dimension has a flag to state whether it is the 'Primary Reason' in the case where there are multiple Involvement Reasons, and it was found this flag was not being appropriately updated. This has been fully investigated and the flag will now be set as it is within One Education (Source).