



# Upgrading One Analytics

last updated for the February 2018 release

Technical Guide

**CAPITA**

## Revision History

Version	Published on
February 2018 - 1.0	01/03/2018

## Doc Ref

Upgrading One Analytics Technical Guide/February 2018/2018-03-01

© Capita Business Services Ltd 2018. All rights reserved. No part of this publication may be reproduced, photocopied, stored on a retrieval system, translated or transmitted without the express written consent of the publisher. Microsoft® and Windows® are either registered trademarks or trademarks of Microsoft Corporation in the United States and/or other countries.

[www.capita-one.co.uk](http://www.capita-one.co.uk)

## Contacting One Application Support

You can log a call with One Application Support via the Customer Service tool available on [My Account](#).

## Providing Feedback on Documentation

We always welcome comments and feedback on the quality of our documentation including online help files and handbooks. If you have any comments, feedback or suggestions regarding the module help file, this handbook (PDF file) or any other aspect of our documentation, please email:

[onepublications@capita.co.uk](mailto:onepublications@capita.co.uk)

Please ensure that you include the document name, version and aspect of documentation on which you are commenting.

# Contents

<b>01 / Upgrading One Analytics .....</b>	<b>1</b>
Purpose .....	1
Overview and Scope .....	1
Prerequisites .....	1
What's new in this release .....	1
Installing the Data Warehouse .....	1
Republishing Data Sources .....	4
Upgrading the One Analytics Console .....	6
Backing up the web.config file .....	6
Uninstalling the existing One Analytics Console .....	6
Install the updated One Analytics Console .....	6
Configuring the One Analytics Console .....	8
<b>Index .....</b>	<b>12</b>

# 01 / Upgrading One Analytics

## Purpose

This document describes how to upgrade One Analytics, and should be used as a reference during the installation of the One Analytics upgrade.

## Overview and Scope

The One Analytics upgrade for this release consists of the following steps:

- Updating the data warehouse
- Republishing data sources
- Upgrading One Analytics Console
- .

## Prerequisites

- An existing One and One Analytics environment, with hardware that meets the minimum OTRA specification.
- SQL Server 2012 R2 Standard Edition or higher.
  - Mixed-mode authentication enabled.
- Oracle Client 12.1.0.2, both 32-bit and 64-bit, configured to connect to any relevant One Oracle databases.
- One Analytics Server and Desktop upgraded to Tableau 10.3 (installers available here: <https://myaccount.capita-cs.co.uk/Notifications/capita-one-analytics-july-2017-release/>)

## What's new in this release

There are two new entries in the One Analytics Console web.config file that must be completed, UsingPrimeAuthentication and TableauServerExternalUrl. For more information, see the [Configuring the One Analytics Console](#) topic on page 8.

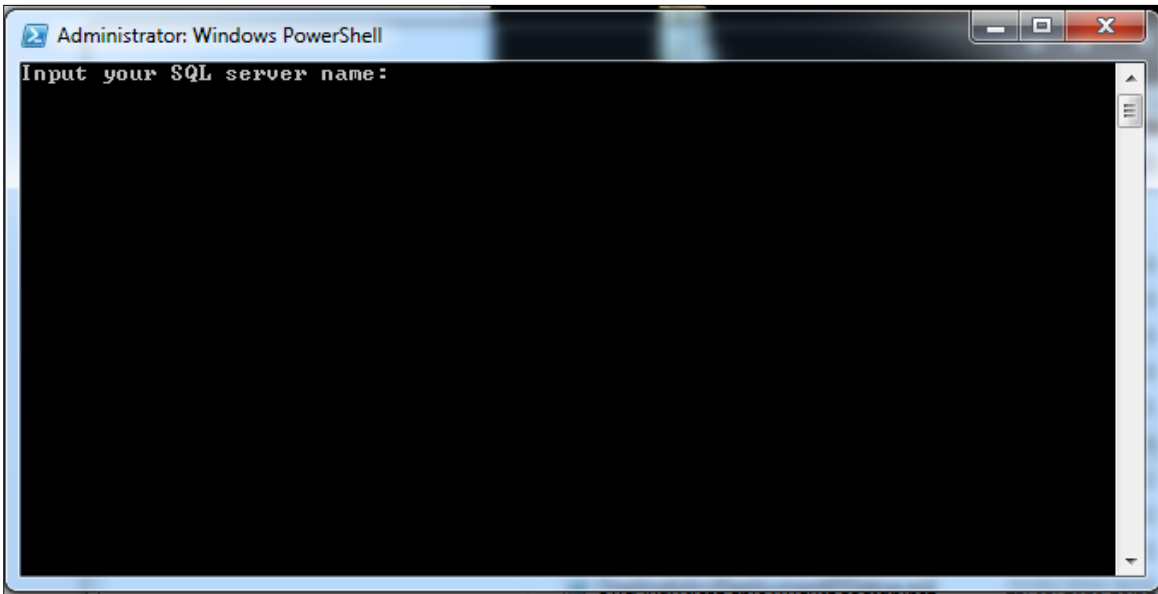
## Installing the Data Warehouse

The data warehouse is installed and upgraded using the OneAnalyticsDeployment.Input.ps1 script. You can run it from any machine with access to the One Analytics SQL server, however it is recommended that you run it directly on the One Analytics server. The script prompts you to enter all the information it requires. After you have entered all the required information, the script starts the installation/upgrade process automatically. You can monitor the installation progress via the SQL Server Agent jobs list in SQL Server. For more information on monitoring progress, see the [View Job Activity](#) page on Microsoft's [TechNet](#) website. When the One Analytics database is installed or updated, a completion message is also displayed in the PowerShell console window.

**IMPORTANT NOTE:** Running the DW Deployment job redeploys the ETL jobs. This removes the job schedules associated with the ETL jobs. You should check the existing schedules prior to running the DW Deployment job as you will need to replace them after it has completed.

1. Open a new PowerShell terminal.
2. Within PowerShell, navigate to the folder where the deployment script is located. The deployment script is located in the DW Deployment folder of the installation media.
3. Run the following command to start the script:

```
.\ OneAnalyticsDeployment.Input.ps1
```



4. Enter the details requested by the script. You should enter details for each requested parameter, unless noted in the table below. The parameters are outlined in the following table.

Input Parameter	Details	Example
Input your SQL Server name	This is the server name of the target SQL environment you are deploying to.	Sqlserver1942\mssql
Input the SQL user name	This is the SQL login for the target SQL environment you are deploying to. This user must have permissions to create databases, and manage security roles within the server, along with creating SQL agent jobs and scheduled tasks.	Sqladmin
Input the SQL user password	This is the password of the SQL login you are connecting to the target SQL environment with.	#####
Input the SQL user name to use the ETL if different from above	This is the SQL login used by the Extract, Transform, and Load (ETL) processes (SQL Jobs). Must have permission to create tables, write to tables, run SQL jobs and be able to add jobs into MSDB.	datauser
Input the SQL user password to use the ETL	This is the password for the SQL login used by the ETL processes (SQL Jobs).	#####
Input your Oracle server name	The server name of the One Oracle database that this warehouse will be populated from. Your Oracle client must be configured to allow this.	EMSMAIN

Input Parameter	Details	Example
Input the Oracle user name	The username for access to the One Oracle database.	onemx64
Input the Oracle user password	The password for access to the One Oracle database	#####
Input your eStart server name	<u>eStart only</u> - The server name\instance name of the eStart SQL server that this warehouse will be populated from. If you do not have an eStart installation in your environment or do not want to analyse eStart data, press the <b>Enter</b> key.	SQLServer12\eStart
Input your eStart database  (only asked if a value was entered for the eStart server name)	The name of the database to retrieve eStart data from.	eSuite
Input the eStart user name  (only asked if a value was entered for the eStart server name)	The username for the eStart database.	eStartAdmin
Input the eStart user password  (only asked if a value was entered for the eStart server name)	The password for the eStart database.	#####
Input your Youth server name	<u>Youth only</u> - The name of the database to retrieve youth data from. If you do not have a Youth installation in your environment or do not want to analyse Youth data, press the <b>Enter</b> key.	EMSMAN_IYSS
Input the Youth user name  (only asked if a value was entered for the Youth server name)	The username for the Youth database.	Onemx64_jyss
Input the Youth User password  (only asked if a value was entered for the Youth server name)	The password for the Youth database.	#####
Input the location of the ETL packages folder  (referring to the SQL Server)	The local path to the ETL packages folder when accessed from the SQL Server.  For example, if the ETL folder is located on the SQL Server's D drive, the path might look like the example provided here.	D:\ONE Analytics\ETL

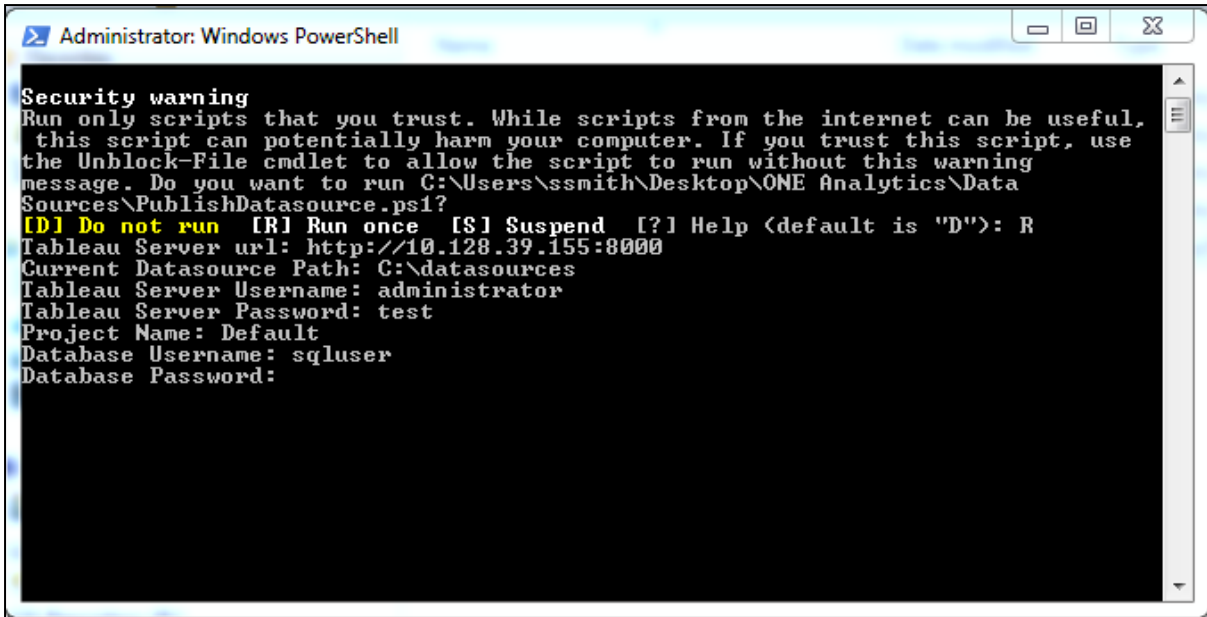
Input Parameter	Details	Example
Input the destination ETL packages folder if different from above  (if you are installing One Analytics from a separate box using a remote mapped drive)	The folder into which the SQL jobs and packages will be copied during the install.  If you are running the install on the <u>same box</u> that houses the SQL Server, this value will be the same as for the above parameter.  If you are running the install from a <u>remote location</u> , the path will use the drive to which you have mapped the SQL Server on this box.  For example, if the ETL folder is mapped onto the V drive, the path might look like the example provided here.	V:\ETL
Input the SQL Server to deploy the SQL job, if different from above	The server name\instance name of the SSIS server. If you are deploying the SQL job to the same SQL server defined earlier, press the <b>Enter</b> key.  The script will automatically skip ahead to the Input the first job schedule (dd/MM/yyyy hh:mm) step.	SQLServer12\SSIS
Input the SQL user to use the ETL	The username to connect to the SQL SSIS instance specified above. This user must have permission to create SSIS jobs and schedules.	Ssisuser
Input the SQL user password to use the ETL	The password for the user specified above.	#####
Input the first job schedule (dd/MM/yyyy hh:mm)	The date and time the first ETL population will occur. The jobs will be scheduled to run once per day from this date onwards.	29/03/2016 15:00
Input if you would trigger SQL jobs - Yes or No	Yes if you want to run the ETL jobs immediately after creation.	Yes or No
Verbose (see what I am doing) - Yes or No	Yes if you want to enable extra logging details within the installation process.	Yes or No

## Republishing Data Sources

In order to publish the data sources used by One Analytics, you must run the PublishDatasource.ps1 script available on the One Analytics release media in the Configuration folder.

**IMPORTANT NOTE:** If you are given a security warning when attempting to run the script, please enter “R” to allow the script to run.

When running, you will be prompted to enter the following details:



Setting Name	Details	Example
Tableau Server URL	The URL to your One Analytics Server installation.	http://xxx.xxx.xxx.xxx
Current Datasource Path	The folder path containing the data source files (part of the One Analytics installation media).	C:\ONE Analytics\Data Sources
Tableau Server Username	The username to login to the One Analytics Server.	OAdmin
Tableau Server Password	The password for the username in the previous value.	#####
Project Name	The project within the One Analytics server that the data sources should be published to. This will overwrite/upgrade any existing version within the project.	Default
Database Username	The SQL Server username to use when the data source connects to the One Analytics data warehouse. This can be any username that has the necessary permissions to access the SQL data warehouse.	SQLUser
Database Password	The password for the database user.	#####
Database Server	The name of the SQL Server database containing the data warehouse.	Sqlserver1942\mssql

After all details are entered, the utility will publish the latest versions of the One Analytics data sources to your One Analytics server.

After a data source has been published, you can embed the password for the data source so that users do not have to re-enter the password every time they try to connect to the data source. For more information, refer to the *Embedding Passwords* topic in the *Installing and Configuring One Analytics* technical guide, available from the One Publications website ([www.onepublications.com](http://www.onepublications.com)).



## Upgrading the One Analytics Console

### Backing up the web.config file

Before attempting to upgrade the One Analytics Console, you should copy your One Analytics Console web.config file. By default, the file is located in the C:\inetpub\wwwroot\ONEAnalytics directory. If you changed any of the directory names when installing the existing version of One Analytics, you will need to amend the location to match your environment.

### Uninstalling the existing One Analytics Console

Before installing the latest version of the One Analytics Console, you must uninstall the existing version. Do this through the **Programs and Features** function in the Windows Control Panel.

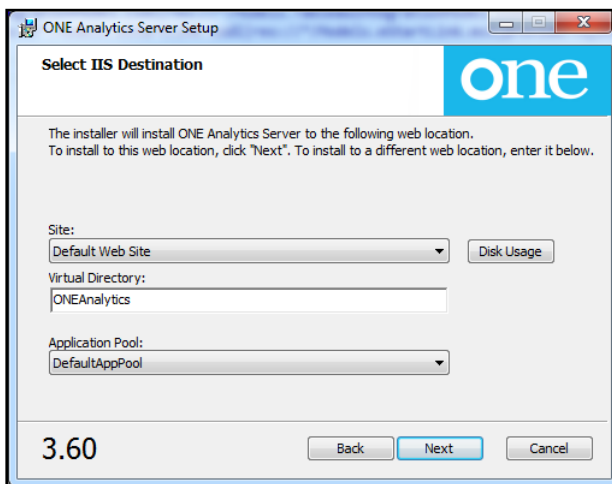
### Install the updated One Analytics Console

You must install the One Analytics Console into your environment. You can install the console on any server inside your LAN, as long as it can access to the One Analytics Server, SSRS and has IIS installed. You should also create a dedicated application pool in IIS, ensuring it is running in integrated managed pipeline mode and running as the NetworkService identity.

1. On the One Analytics installation media, double click the ONEAnalyticsSetup.msi to display the **One Analytic Server Setup** wizard.



2. Click the **Next** button to display the **Select IIS Destination** page.



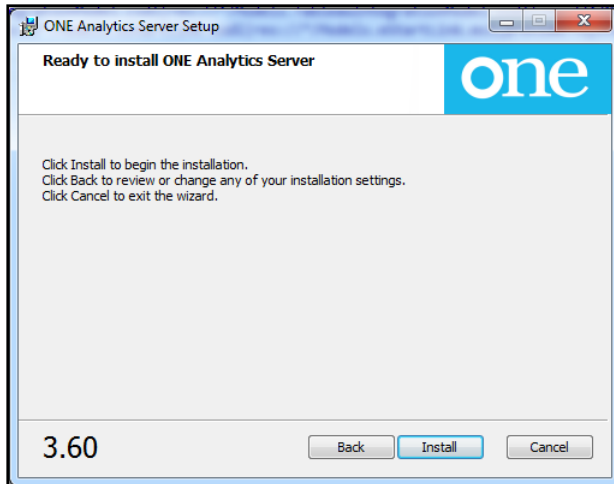
3. Select the options appropriate for your environment.

**Site:** The IIS site into which you want to install the One Analytics Console web application.

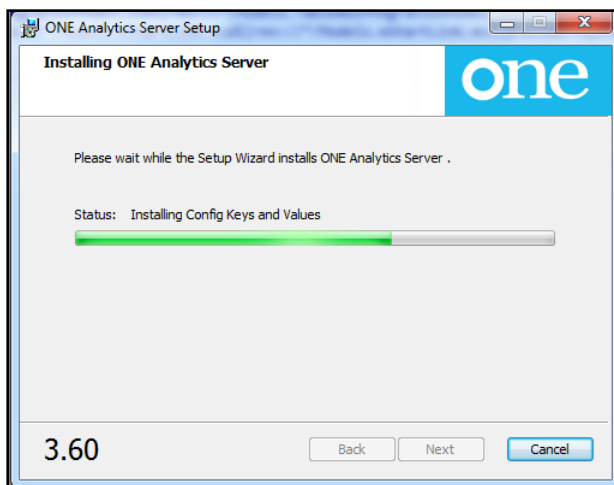
**Virtual Directory:** The name of the virtual directory that will be created during the installation process. This is typically the name that will be used to reference the site in the browser (e.g. <https://mylocalauthority.com/ONEAnalytics>).

**Application Pool:** The name of the application pool in which the newly created web application will run. It is recommended that the application runs in its own application pool and is running in integrated managed pipeline mode.

- Click the **Next** button to display the **Ready to Install ONE Analytics Server** page.

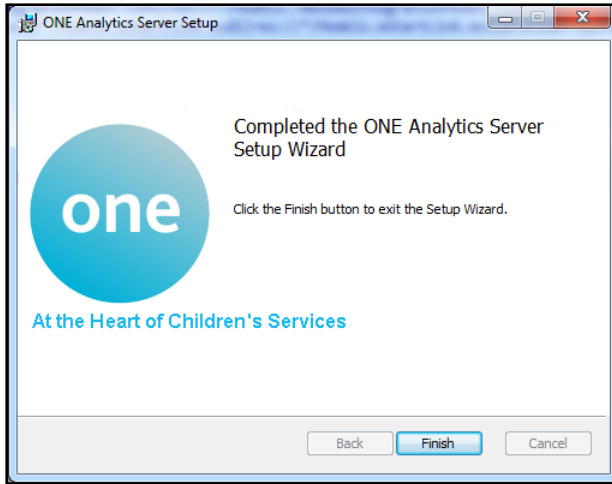


- Click the **Install** button to begin the installation.



The installation will now take place, copying the application files to your IIS instance, and performing all required configuration within IIS.

- Once the installation is complete, click the **Finish** button to close the installation dialog.



## Configuring the One Analytics Console

This release includes new entries in the One Analytics Console web.config file. You must enter the existing values from your backup web.config file into the new version of the web.config file installed by the One Analytics Console MSI.

Config Area	Setting Name	Details	Example
connectionStrings	TableauIntegrationEntities	Connection details to access the Tableau Integration database	Data source=sqlserver\instance; initial catalog=TableauIntegration; user id=sqlUser;password=sqlUserPassword;MultipleActiveResultSets=True;App=EntityFramework
	eStartLinkEntities	Connection details to access the OA Staging database	data source=sqlserver\instance;initial catalog=OneAnalyticsDWStaging; user id=sqlUser;password=sqlUserPassword;MultipleActiveResultSets=True;App=EntityFramework
appSettings	ApplicationServerUrl	The URL to the application server	https://localauthority.com/CCSApplicationServer
	UsingPrimeAuthentication	Set to true if your SSRS environment use Prime Authentication	True or false
system.webServer	customHeaders. Access-Control-Allow-Origin	The URL to the Tableau server	http://myTableauServer:8000
system.serviceModel	endpoint	ReportService2010.asmx of the SSRSServer	https://localauthority.com/ReportServer/ReportService2010.asmx
applicationSettings	TableauServerURL	The URL to the One Analytics (Tableau) server installation	http://myTableauServer:8000

Config Area	Setting Name	Details	Example
applicationSettings (cont'd)	TableauServerExternalUrl	Set to the Tableau URL that will be accessible to browsers. If using URL rewriting to access the Tableau server then use this URL, otherwise use the same value as for TableauServerURL	http://externallyAccessibleTableauServer:8000
	TableauUsername	The username of the service account to use for connection to the One Analytics (Tableau) server	TableauConsole
	TableauSiteName	The site name of the One Analytics (Tableau) Server that will host the OA Console content in the case where multiple sites are used. If only a single site is needed, leave this blank	TestSite
	TableauProjectName	The name of the project within the One Analytics (Tableau) server that will host the content for the OA Console.	OAConsoleReports
	FeedbackApplicationURL	Setting not currently used; leave blank.	
	TableauPassword	The password for the user specified in the TableauUsername setting. The settings should be encrypted – see below.	*****
	SSRSServerURL	The URL to your report server hosting the SSRS content to share via the OA Console	https://localauthority.com/Reports/Pages/Report.aspx?ItemPath=

Config Area	Setting Name	Details	Example
applicationSettings (cont'd)	SSRSUsername	The username for authentication to the SSRS report server. If the One environment uses PRIME, this should be a One user account. If the One environment does not use PRIME, this should be a Windows user account. The settings should be encrypted. For more information, refer to the <i>Encrypting config values</i> topic in the <i>Installing and Configuring the One Analytics Console</i> chapter of the <i>Installing and Configuring One Analytics</i> technical guide, available from the <a href="#">One Publications</a> website.	SSRSServiceUser
	SSRSPassword	The password for the username specified in the SSRSUsername setting. The settings should be encrypted. For more information, refer to the <i>Encrypting config values</i> topic in the <i>Installing and Configuring the One Analytics Console</i> chapter of the <i>Installing and Configuring One Analytics</i> technical guide, available from the <a href="#">One Publications</a> website.	*****
	SSRSAppDomain	The domain name for the username specified in the SSRSUsername setting. If you are using a One user account for the SSRSUsername (because your environment uses PRIME), then this value should be blank. The settings should be encrypted. For more information, refer to the <i>Encrypting config values</i> topic in the <i>Installing and Configuring the One Analytics Console</i> chapter of the <i>Installing and Configuring One Analytics</i> technical guide, available from the <a href="#">One Publications</a> website.	Localauthority.com or blank if using One PRIME.

Config Area	Setting Name	Details	Example
applicationSettings (cont'd)	SSRSFolderName	The name of the folder on the report server containing the content to make available via the OA Console.	OAReports

## Index

Backing up the web.config file.....	6
Configuring the One Analytics Console .....	8
Install the updated One Analytics Console .....	6
Installing the Data Warehouse .....	1
Overview and Scope .....	1
Prerequisites .....	1
Purpose .....	1
Republishing Data Sources.....	4
Uninstalling the existing One Analytics Console	6
Upgrading the One Analytics Console .....	6
What's new in this release .....	1