



# Upgrading One Analytics

last updated for the March 2018 release

Technical Guide

**CAPITA**

## Revision History

Version	Published on
March 2018 - 1.0	29/03/2018

## Doc Ref

Upgrading One Analytics Technical Guide/March 2018/2018-03-29

© Capita Business Services Ltd 2018. All rights reserved. No part of this publication may be reproduced, photocopied, stored on a retrieval system, translated or transmitted without the express written consent of the publisher. Microsoft® and Windows® are either registered trademarks or trademarks of Microsoft Corporation in the United States and/or other countries.

[www.capita-one.co.uk](http://www.capita-one.co.uk)

## Contacting One Application Support

You can log a call with One Application Support via the Customer Service tool available on [My Account](#).

## Providing Feedback on Documentation

We always welcome comments and feedback on the quality of our documentation including online help files and handbooks. If you have any comments, feedback or suggestions regarding the module help file, this handbook (PDF file) or any other aspect of our documentation, please email:

[onepublications@capita.co.uk](mailto:onepublications@capita.co.uk)

Please ensure that you include the document name, version and aspect of documentation on which you are commenting.

# Contents

<b>01   Upgrading One Analytics .....</b>	<b>1</b>
Purpose .....	1
Overview and Scope .....	1
Prerequisites .....	1
What's new in this release .....	1
Upgrading Tableau Server .....	1
Updating the PATH Environment Variable .....	2
Republishing Data Sources .....	2
Upgrading the One Analytics Desktop .....	3
<b>Index .....</b>	<b>5</b>

# 01 / Upgrading One Analytics

## Purpose

This document describes how to upgrade One Analytics, and should be used as a reference during the installation of the One Analytics upgrade.

## Overview and Scope

The One Analytics upgrade for this release consists of the following steps:

- Upgrading Tableau server
- Updating the PATH Environment Variable
- Republishing data sources
- Upgrading One Analytics Desktop

## Prerequisites

- An existing One and One Analytics environment, with hardware that meets the minimum OTRA specification.
- SQL Server 2012 R2 Standard Edition or higher.
  - Mixed-mode authentication enabled.
- Oracle Client 12.1.0.2, both 32-bit and 64-bit, configured to connect to any relevant One Oracle databases.
- Tableau Server 10.5.2 and Desktop 10.5.2 installers (available from <https://myaccount.capita-co.uk/Notifications/capita-one-analytics-march-2018-release/>)

## What's new in this release

One Analytics now requires that Tableau Server and Tableau Desktop running at 10.5.2. For more information on upgrading these components, see [Upgrading Tableau Server](#) on page 1 and [Upgrading the One Analytics Desktop](#) on page 3.

## Upgrading Tableau Server

This release of One Analytics uses a new version of Tableau Server. However, before applying the upgrade, you should use the tools supplied by Tableau to clean up your installation and then back up the database. For full details on Tableau server maintenance, refer to the [Server Maintenance](#) page, provided by Tableau.

Alternatively, you can run the following commands from within the Tableau bin folder (or from any location if you've added the bin folder to your Windows PATH variable):

```
tabadmin cleanup
tabadmin backup <backupfilename> -d
```

To upgrade the server, run the TableauServer-10-5-2-CapitaServer-64bit.exe (provided in the OA-Tableau-10-5-2 release media on Solus).

**IMPORTANT NOTE:** When you upgrade the Tableau server, each One Analytics Desktop user must upgrade their version of the desktop application.

## Updating the PATH Environment Variable

You should update the Windows PATH environment variable to ensure that all the One Analytics executables continue to be easily accessible throughout the system. The PATH environment variable was configured during installation, and must be changed to reflect the new version of Tableau installed as part of this release. Although the folder location is dependent on where you chose to install the One Analytics server components, the default location is C:\Program Files\Tableau\Tableau Server\

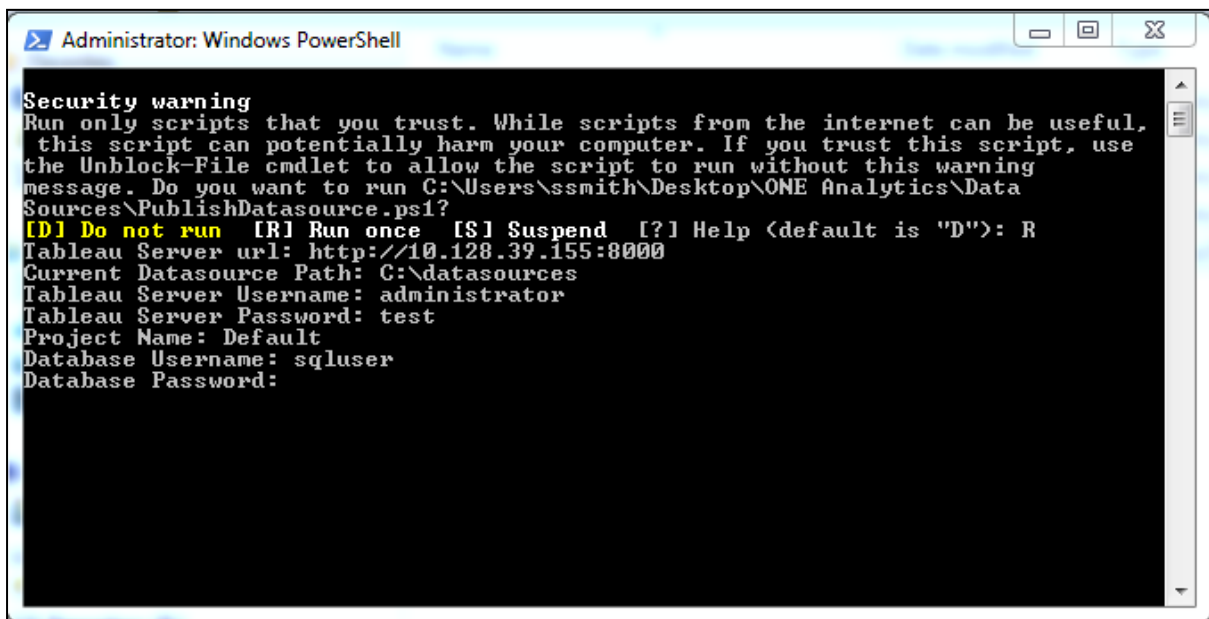
For more information on adding a folder to the PATH environment variable, refer to the [How to: Add Tool Locations to the PATH Environment Variable](#) page, available from Microsoft.com.

## Republishing Data Sources

In order to publish the data sources used by One Analytics, you must run the PublishDatasource.ps1 script available on the One Analytics release media in the Configuration folder.

**IMPORTANT NOTE:** If you are given a security warning when attempting to run the script, please enter "R" to allow the script to run.

When running, you will be prompted to enter the following details:



Setting Name	Details	Example
Tableau Server URL	The URL to your One Analytics Server installation.	http://xxx.xxx.xxx.xxx
Current Datasource Path	The folder path containing the data source files (part of the One Analytics installation media).	C:\ONE Analytics\Data Sources
Tableau Server Username	The username to login to the One Analytics Server.	OAdmin
Tableau Server Password	The password for the username in the previous value.	#####
Project Name	The project within the One Analytics server that the data sources should be published to. This will overwrite/upgrade any existing version within the project.	Default



Setting Name	Details	Example
<b>Database Username</b>	The SQL Server username to use when the data source connects to the One Analytics data warehouse. This can be any username that has the necessary permissions to access the SQL data warehouse.	SQLUser
<b>Database Password</b>	The password for the database user.	#####
<b>Database Server</b>	The name of the SQL Server database containing the data warehouse.	Sqlserver1942\mssql

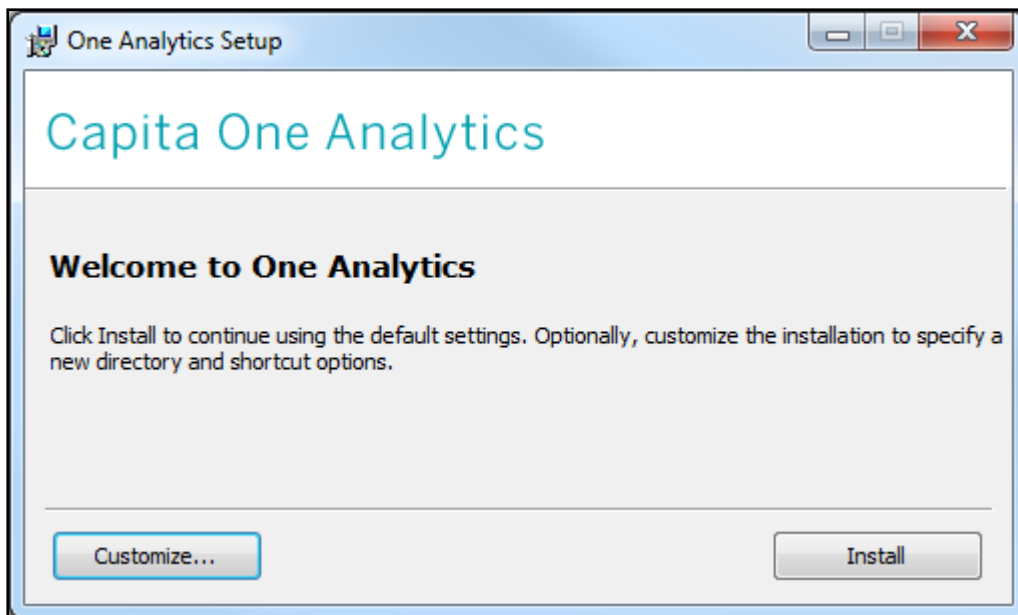
After all details are entered, the utility will publish the latest versions of the One Analytics data sources to your One Analytics server.

After a data source has been published, you can embed the password for the data source so that users do not have to re-enter the password every time they try to connect to the data source. For more information, refer to the *Embedding Passwords* topic in the *Installing and Configuring One Analytics* technical guide, available from the One Publications website ([www.onepublications.com](http://www.onepublications.com)).

## Upgrading the One Analytics Desktop

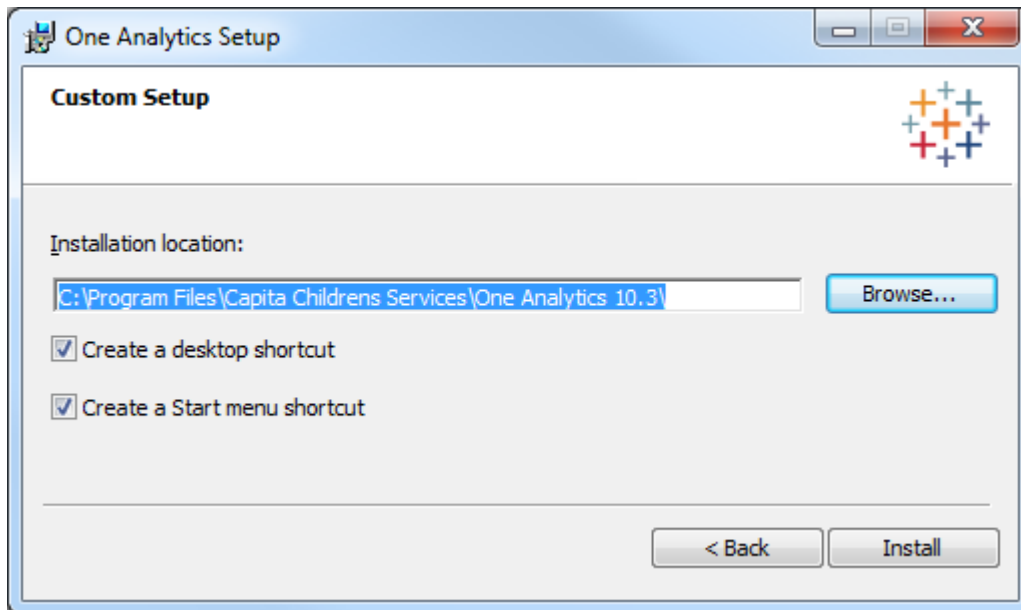
**NOTE:** The existing version of One Analytics Desktop is not removed automatically when the upgrade is installed. If you want to uninstall prior versions following the upgrade, you must do so manually.

- From the OA-Tableau-10-5-2 release media on Solus, run the 64-bit One Analytics Desktop installer.

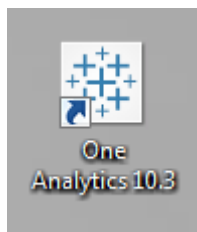


- If you want to install with the default options, click the **Install** button. Alternatively, click the **Customize** button to display the **Custom Setup** page and change the installation location or change the shortcut options:

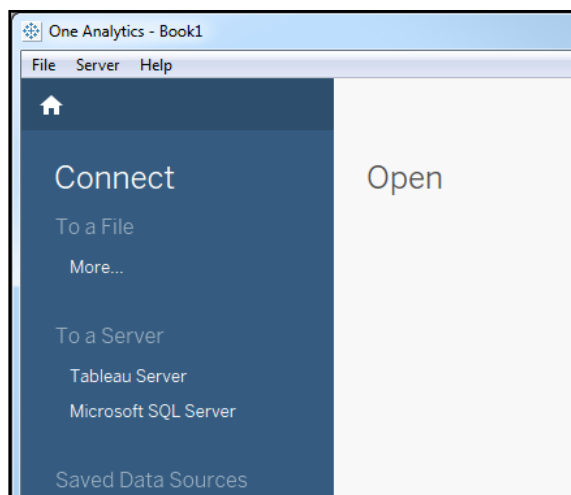
## Upgrading One Analytics



After installation, the One Analytics shortcuts should be on your start menu or desktop, depending on the options selected during installation.



2. Double-click a shortcut to start the software.



1. .

# Index

Overview and Scope .....	1
Prerequisites .....	1
Purpose .....	1
Republishing Data Sources.....	2
Updating the PATH Environment Variable.....	2
Upgrading Tableau Server .....	1
Upgrading the One Analytics Desktop .....	3
What's new in this release .....	1