



Analysis Reporting Clusters

Menu: Focus | Analysis Reporting | Areas, Clusters and Groupings

Clusters

A **Cluster** can be defined as a collection of bases. Students are then populated within the selected bases using the **Groupings** focus. A Cluster can be defined by **Manual Population** or by creating and using a report maintained in **SQL Server Reporting Services (SSRS)**.

Area, Cluster and Grouping Enquiry.

Search Collapse

Name

Delete

Name	Type	Description
Cluster		
Cluster - Primary Schools	Snapshot	Cluster containing LA Primary Schools
Cluster - Secondary Schools	Snapshot	Cluster containing LA Secondary Schools

Area, Cluster and Grouping Enquiry:

Search for an existing Cluster.
Highlight and **Open In New Window** or double-click.
Click on **New** dropdown and select **Cluster** to open the **Cluster Detail [New Cluster]**

Cluster - Manual Population

*Manual Population is the simplest way to define a Cluster
If the Cluster population changes you must make the changes 'manually'.*

Cluster Detail[New Cluster]

Save Choose Report

1. Basic Details 2. Cluster Population 1. Basic Details

1. Basic Details

Name

Description

Manual Population

Report Name

Date Created

Created By

Last Populated

Populated By

2. Cluster Population

Name	Base Type	LA	School No.	Control	Active

Cluster Detail [New Cluster]:

Enter **Name** (mandatory) and **Description**

Manual Population

Add button for **Cluster Population** will become available.

Cluster Population:

Click **Add** to open **Base Enquiry**



Analysis Reporting Clusters

Menu: Focus | Analysis Reporting | Areas, Clusters and Groupings

Cluster - Manual Population (cont'd)

Base Enquiry

Search Collapse

Name:

Base Type: Active

Base Selection: All Bases Assessment Stage: All Assessment

School No.: URN:

Select New Delete Open Next Previous

Cluster Population | Base Enquiry:
 Choose field to search for Bases to populate the Cluster.
 For example, to create a Cluster containing Primary Schools in your Local Authority, click the **Base Type** (Table_ID 0070) dropdown and select **Primary Schools**.
 Click on the **Base Selection** dropdown and select **LA Bases**.
 Search.

Base Enquiry

Name:

Base Type: Primary Schools Active

Base Selection: LA Bases Assessment Stage:

School No.: URN:

Select New Delete Open Next Previous

Name	Base Type	LA	School No.	Control	Active
Primary School	Primary Schools	Bedford	1	Community	Yes
Infant School	Primary Schools	Bedford	2	Community	Yes
Primary School	Primary Schools	Bedford	3	Voluntary Controlled	Yes
Lower School	Primary Schools	Bedford	4	Community	Yes

Cluster Population | Base Enquiry:
 Use **Ctrl and left mouse click** to highlight particular Bases.
 Use **Shift and left mouse click** or **Shift and down arrow** to highlight **all** Bases.
 Click **Select** to add the required Bases to **Cluster Population**.

2. Cluster Population

Name	Base Type	LA	School No.	Control	Active
Primary School	Primary Schools	Bedford	1	Community	Yes
Infant School	Primary Schools	Bedford	2	Community	Yes
Primary School	Primary Schools	Bedford	3	Voluntary	Yes
Lower School	Primary Schools	Bedford	4	Community	Yes

Add Remove

Date Created: 14/06/2011
 Created By: Grpmgr8
 Last Populated: 14/06/2011
 Populated By: GRPMGR8

Cluster Population:
 When the required Bases have been added, **Save**.
Date Created, Created By, Last Populated and **Populated By** will automatically be recorded.
 You can **Add** or **Remove** Bases if the Cluster changes. If the Cluster is changed **Last Populated** and **Populated By** will be updated.

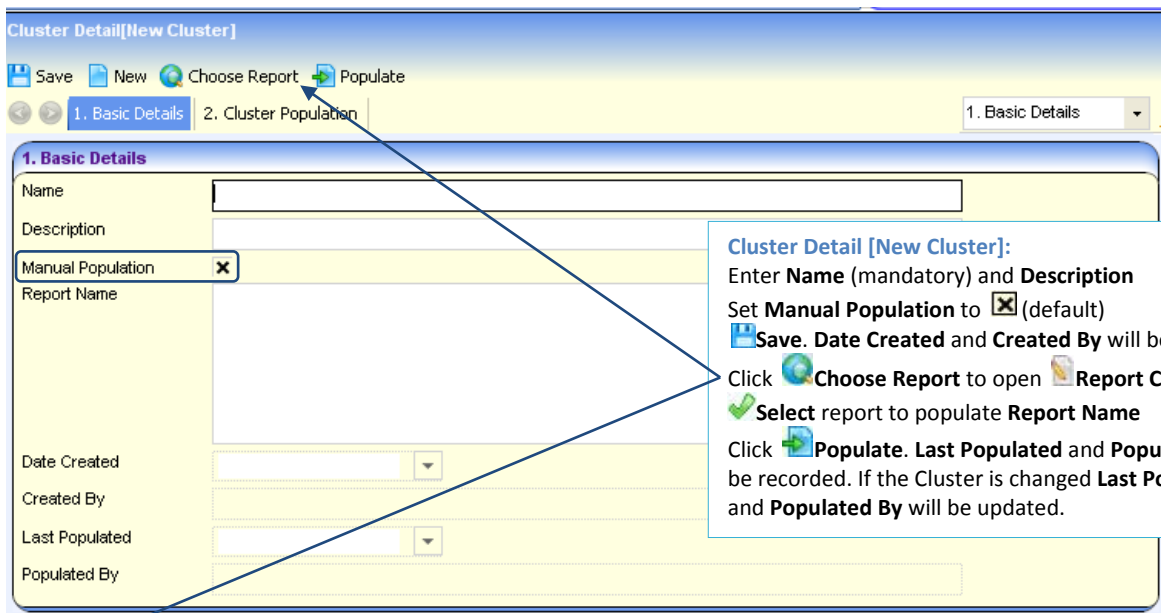
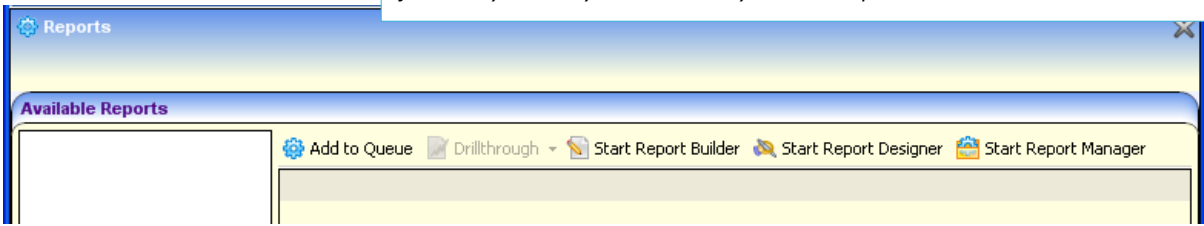


Analysis Reporting Clusters

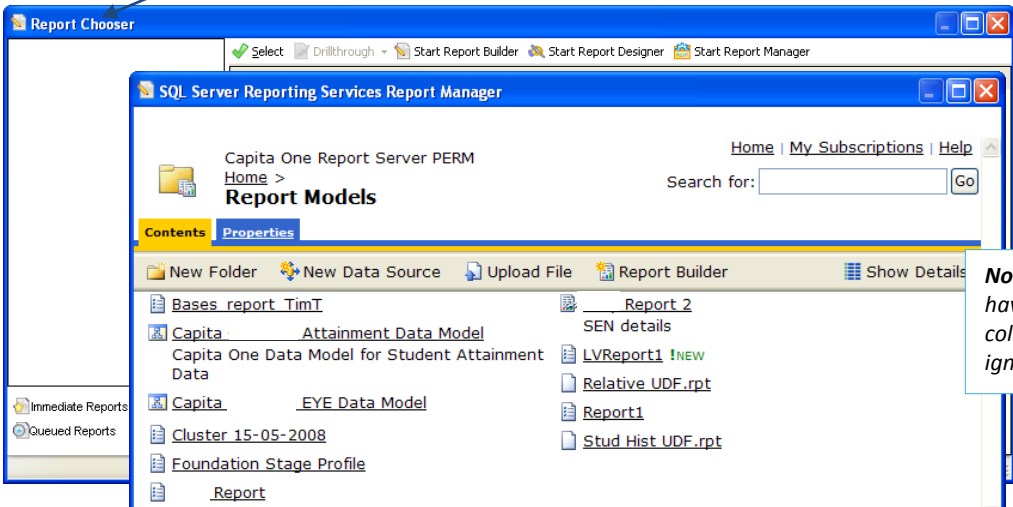
Menu: Focus | Analysis Reporting | Areas, Clusters and Groupings

Cluster – SSRS Population

Populating a Cluster this way means that if the Cluster population changes your data will be updated. Before you can populate a Cluster you must create a Report in Focus | Analysis Reporting | Report | **Start Report Builder**. The Cluster population (collection of Bases) can be fixed or dynamically amended every time the report is run.



Cluster Detail [New Cluster]:
 Enter **Name** (mandatory) and **Description**
 Set **Manual Population** to (default)
 Click **Save**. **Date Created** and **Created By** will be recorded.
 Click **Choose Report** to open **Report Chooser**
 Select report to populate **Report Name**
 Click **Populate**. **Last Populated** and **Populated By** will be recorded. If the Cluster is changed **Last Populated** and **Populated By** will be updated.



Note: The SSRS Report must have the **Base_ID** as the first column; all other columns are ignored.