



There are four steps to installing and configuring the System Administration utility so that you can run it without having to log in to Windows as an administrator:

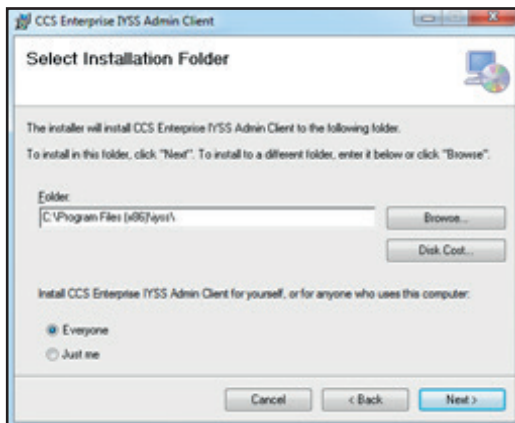
- Install the CCS Enterprise IYSS Admin Client.
- Update the careers.cfg file.
- Create a new Windows System Administrator user.
- Create a System Administration tool login.

NOTE: You must already have an IYSSADMIN user set up in One IYSS. For more information on configuring a new user within IYSS itself, see the *User Accounts* chapter in Part 1 of the *One IYSS System Administration* handbook.

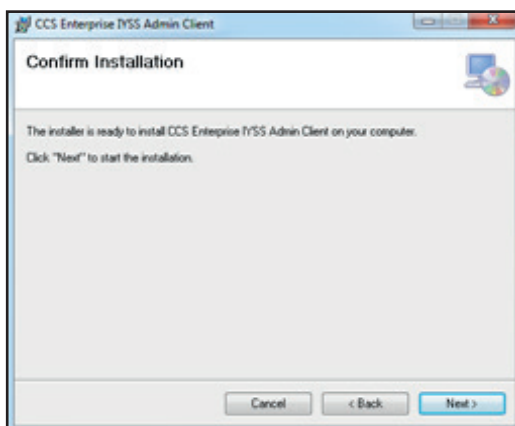
Installing the IYSS Admin Client

1. In Windows Explorer, open the CCSEnterpriseIYSSAdminClient file to display the Setup Wizard's **Welcome** screen.
2. Click the **Next** button to display the **Select Installation Folder** screen.

You can enter a new folder location into the **Folder** field if required. However, it is recommended that you keep the default location (C:\Program Files (x86)\iyss).



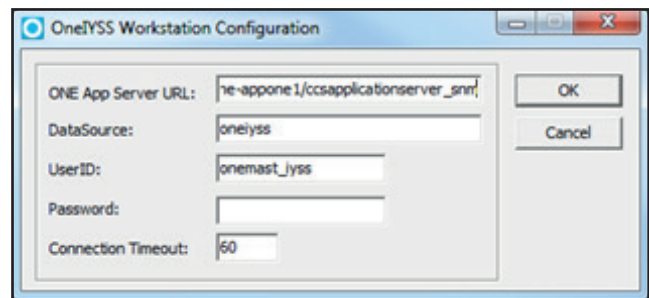
3. Click the **Next** button to display the **Confirm Installation** screen.



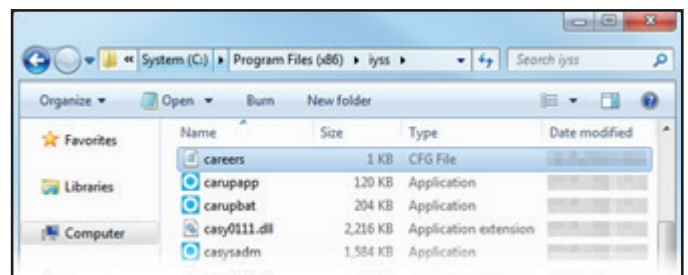
4. Click the **Next** button to install the IYSS Admin Client. When the installation is complete, click the **Close** button to close the installer.

Updating the Careers.cfg File

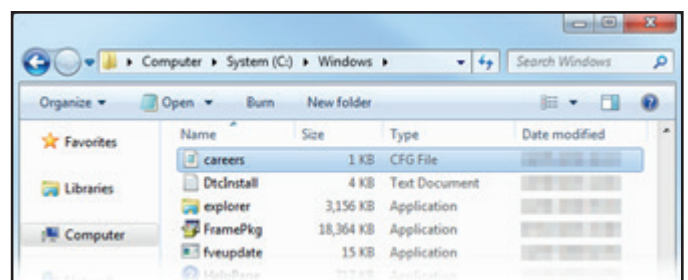
1. In Windows Explorer, select the C:\Program Files (x86)\iyss folder and then double-click on the careers.cfg file to display the **OneIYSS Workstation Configuration** dialog.



2. Enter the required information, then click the **OK** button to update the careers.cfg file and close the dialog.
3. Copy the careers.cfg file.



4. In Windows Explorer, select the C:\Windows folder and paste the careers.cfg file into this folder.



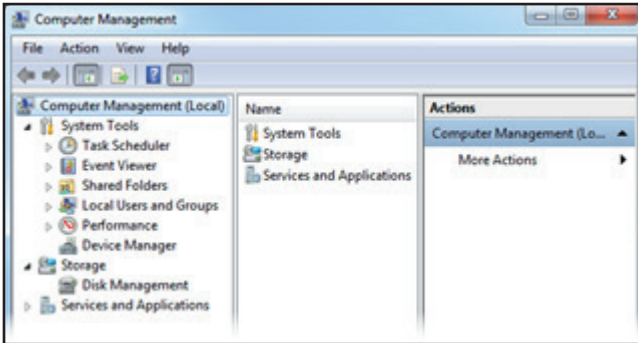
5. In Windows Explorer, select the C:\Windows\System32 folder and paste the careers.cfg file into this folder as well.

NOTE: At this point, you should ensure that the Oracle client is installed on your machine and that the TNS names are set up.

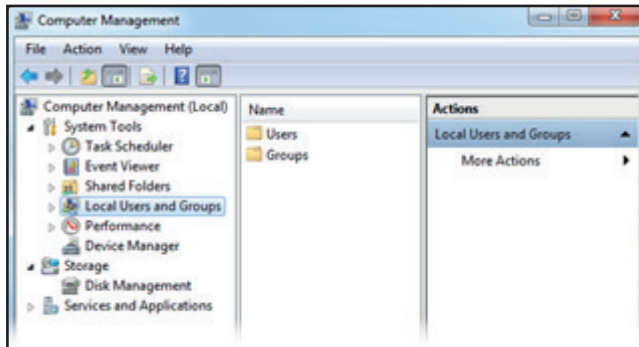


Creating a New Windows System Administrator User

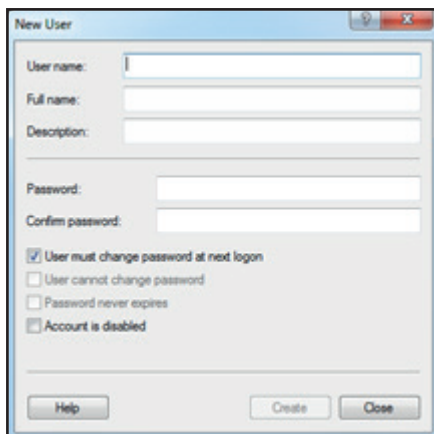
1. Select **Start | Control Panel | Administrative Tools | Computer Management** to display the **Computer Management** dialog.



2. Create a new Windows user:
 - a. Select **Local Users and Groups** to display the **Users and Groups** folders.



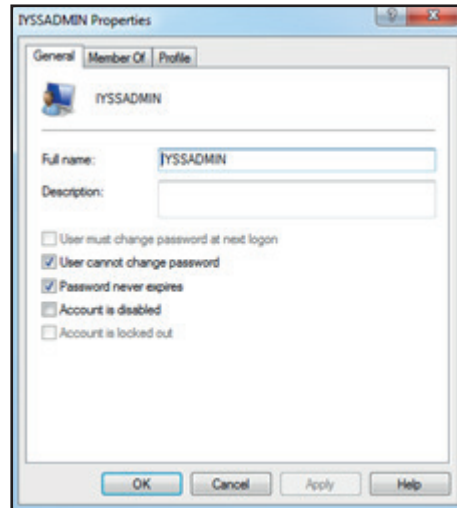
- b. Right-click the **Users** folder and then select **New User** to display the **New User** dialog.



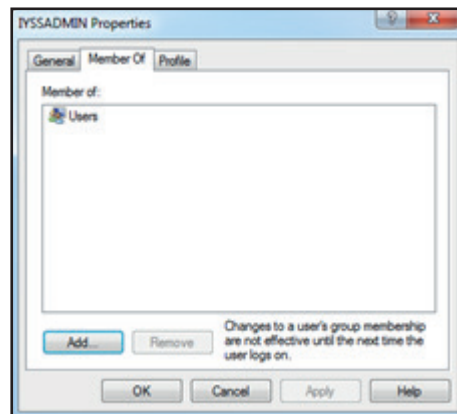
- c. Deselect the **User must change password at logon** check box
- d. Select the **User cannot change password** and **Password never changes** check boxes.
- e. Enter IYSSADMIN into the **User name** field.
- f. Enter a password into the **Password** field.
- g. Click the **Create** button to create the user, and then click the **Close** button to close the **New User** dialog.

3. Make the new user a member of the **Administrators** group:

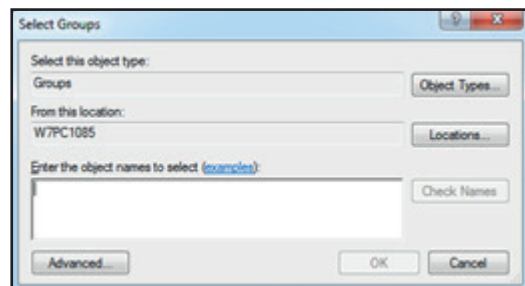
- a. Right click the newly-created user and select **Properties** to display the **Properties** dialog.



- b. Select the **Member Of** tab.



- c. Click the **Add** button to display the **Select Groups** dialog.



- d. Type 'Administrators' into the **Enter the object names to select** field and click the **Check Names** button.
- e. Click the **OK** button to add the IYSSADMIN user to the **Administrators** group and close the **Select Groups** dialog.
- f. Click the **Apply** button and then the **OK** button to save your changes and close the **Properties** dialog.

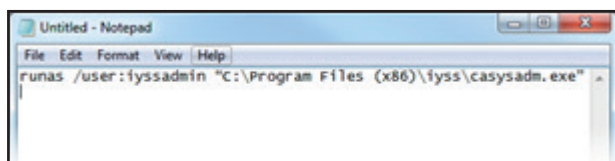


Creating a System Admin Tool Login

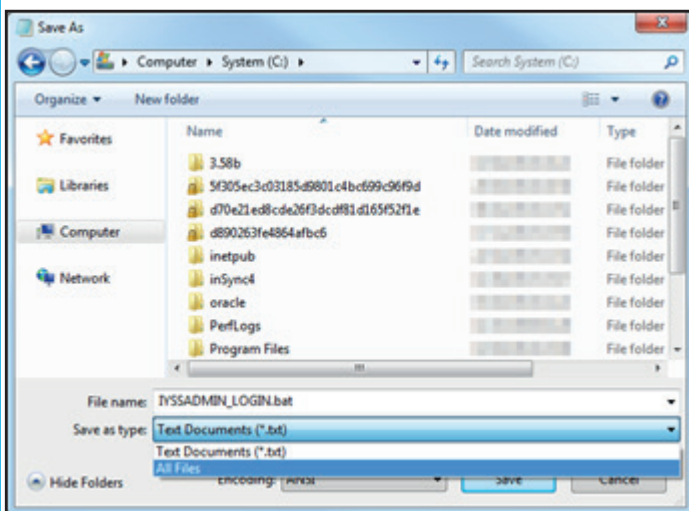
1. Create a new document in Notepad and paste the following line into it:

```
runas /user:iyssadmin "C:\Program Files (x86)\iyss\casysadm.exe"
```

NOTE: If you did not install the IYSS admin client to the default location, use the full path name of the installation location.



2. Save the file to the C:\ folder as a batch file with the name IYSSADMIN_LOGIN.bat:
 - a. Select **File | Save** in Notepad to display the **Save As** dialog.
 - b. Select the C:\ folder.
 - c. Select **All Files** from the **Save As type** drop-down menu.
 - d. Enter "IYSSADMIN_LOGIN.bat" (without quotes) into the **File Name field** and then click the **Save** button to save the file and close the dialog.

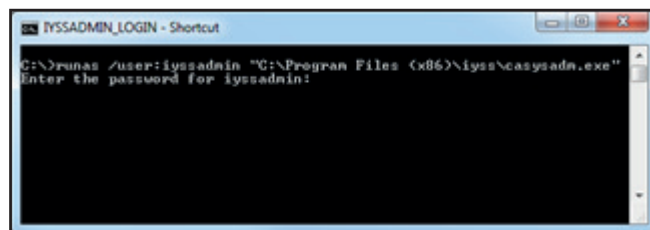


3. If required, create a desktop shortcut to the .BAT file on the desktop:
 - a. In Windows Explorer, select the C:\ folder
 - b. Right-click on the IYSSADMIN_LOGIN.bat file and select **Create Shortcut** to create a shortcut to the .BAT file.
 - c. Cut and paste the shortcut to the desktop.

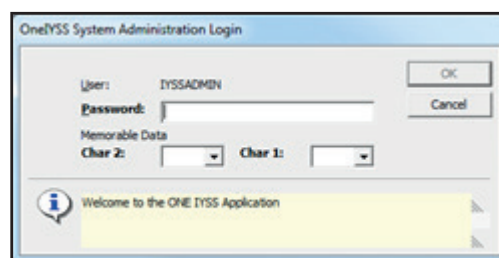
Logging in to the System Admin Tool

This batch file can be run from any user account on the server. It does not need to be run from an Administrator account.

1. Double-click the IYSSADMIN_LOGIN desktop shortcut to display a password prompt.



2. Enter the password for the Windows user that you just set up and press the **Enter** key to open the **One IYSS System Administration Login** dialog.



3. Enter the IYSS password and memorable data for the IYSSADMIN user.

For more information on working with passwords and memorable data in IYSS, see the *Managing User Accounts* chapter in the *One IYSS System Administration* handbook.

4. Click the **OK** button to log in to the System Administration tool.