

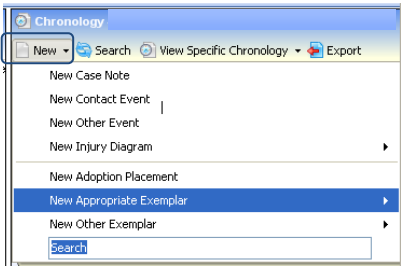


Relationships Exemplars

Menu: Focus | People | ICS Person | Chronology | New | New Appropriate Exemplar/New Other Exemplar
 Focus | ICS Forms | Form Definitions | Create New Form for Data Entry

Relationships records the associations between the Subject and other people. Functionality to manage Relationships is also available in **Case Notes**, **Contact Record** and **Social Network**.

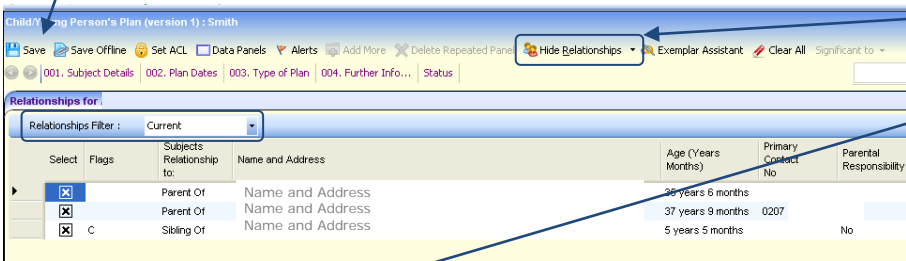
ICS Person Chronology



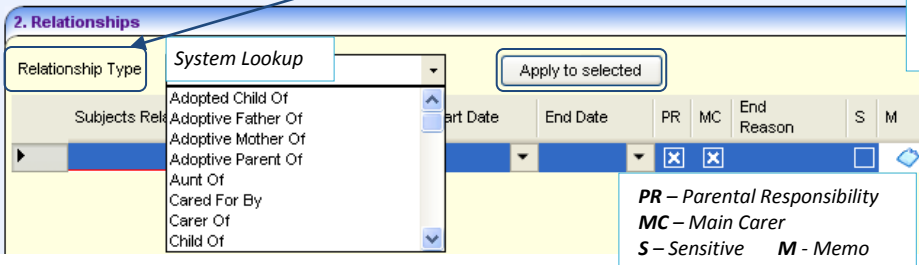
Exemplar: On the Chronology select **New Appropriate Exemplar** or **New Other Exemplar**.

Save the Relationship(s)

Show/Hide Relationships:
 Click button to **Hide Relationships** panel. Options available on dropdown to '**Always show Relationship panel**' or not. Set **Relationships Filter** to **Current** or **All**.

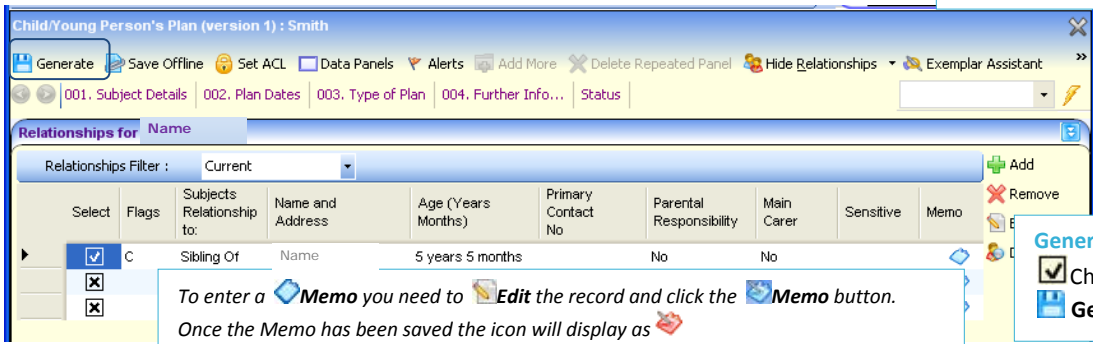


Click to **Add** new Relationship to Subject
 Click **Remove** to delete a Relationship
 Click **Edit** to open the Person Relationship
 Click **Details** to view the Person Details.



Add New Relationship:
 Select **Relationship Type** from dropdown
 Enter other details as required
 Click **Apply to selected** button
Save the Relationship/s
 You can Add or Remove Relationships here.

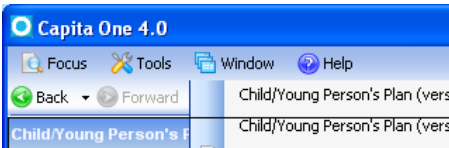
PR – Parental Responsibility
MC – Main Carer
S – Sensitive M - Memo



To enter a **Memo** you need to **Edit** the record and click the **Memo** button. Once the Memo has been saved the icon will display as

Generate Exemplars:
 Check records that you wish to
Generate Exemplars for

- Related Reference Guides:**
- RG_Relationships_Case Notes
 - RG_Relationships_Contact Record
 - RG_Relationships_Social Network



Window:
 Click **Window** button to view newly generated Exemplars. Each Exemplar must be saved individually.