



One Analytics Release Notes

January 2019

CAPITA

Revision History

Version	Published on
January 2019 - 1.0	11/01/2019

© Capita Business Services Ltd 2019. All rights reserved. No part of this publication may be reproduced, photocopied, stored on a retrieval system, translated or transmitted without the express written consent of the publisher. Microsoft® and Windows® are either registered trademarks or trademarks of Microsoft Corporation in the United States and/or other countries.

www.capita-one.co.uk

Contacting One Application Support

You can log a call with One Application Support via the Customer Service tool available on [My Account](#).

Providing Feedback on Documentation

We always welcome comments and feedback on the quality of our documentation including online help files and handbooks. If you have any comments on any aspect of our documentation, please email:

onepublications@capita.co.uk

Please ensure that you include the document name, version and aspect of documentation on which you are commenting.

Contents

Document Purpose	1
Upgrading the Software	2
Compatibility with Capita One	2
Compatibility with Tableau	2
Software Distribution	2
Changes in the New Release	3
Updated Data Sources.....	3
Resolved and Known issues.....	8

Document Purpose

These release notes are provided to users to detail the enhancements and resolutions included with the One Analytics January 2019 release. Each release contains all fixes and enhancements issued since the previous release. Instructions for downloading the latest release installation media are also included.

Should you have any questions about the implementation, testing, or user impacts of the changes listed in this document, please contact the One Application Support Team.

Upgrading the Software

Compatibility with Capita One

The One Analytics January 2019 release is designed to be compatible with the following versions of the Capita One system:

3.65

3.66

3.67

If you are running an older version of Capita One, we recommend that you upgrade to at least the 3.65 release prior to installing this update.

Compatibility with Tableau

The One Analytics January 2019 release is designed to be compatible with Tableau 10.5.

If you have not upgraded the Tableau components of One Analytics to Tableau 10.5 (included as part of the March 2018 release), you must do so as part of this upgrade. The Tableau 10.5 download link and password are available from the One Analytics January 2019 My Account posting:

<https://myaccount.capita-cs.co.uk/Notifications/capita-one-analytics-January-2019-release/>

Software Distribution

The One Analytics January 2019 release is available as a download only. Links to the self-extracting installation files are included below. One Co-ordinators will be emailed with the password to enable them to unzip the installation media.

The installation files for the One Analytics January 2019 release is available via the following link:

<http://dl.capitasolus.co.uk/onedownloads/OA-2019-Jan.exe>

Changes in the New Release

Updated Data Sources

The following data sources have been updated in this release due to 'Core' fields being migrated to the Data Warehouse:

- CSS Involvement & Comms Log
- SEN, Provision & Comms Log
- Provision & Comms Log
- Activity & Comms Log
- Attainment
- Attendance
- Admissions & Transfers
- Early Years
- Exclusions
- Estart
- Youth Justice
- System Administration

The changes are documented in the sections below.

New Functionality: Tableau Calculated Fields migrate to the Data Warehouse

Calculated Fields migration to One Analytics Data Warehouse

The January 2019 release continues the focus as noted in the November 2018 release where tableau calculated fields have been extensively used within data sources, and that these are being migrated where appropriate to the One Analytics Data Warehouse to improve performance and simplify the models.

The scope of the January release is noted below.

- Migrate 'Common Calculated Fields' – These are calculated fields which evaluate information in 'Core' dimensions and as a result can exist multiple times in multiple of Data Sources, such as the 'Postcode Outcode', 'CLA Now' or the Person's 'Full Name Id'.
- CSS Involvement & Comms Log Data Source

The calculated fields migrated are listed below and where they can be found within the models.

Where the Calculated Field has been migrated, they will have been deleted from the Data Source, therefore if they have been used within workbooks the references to these fields will need to be replaced, and which is documented in section '*How to fix up workbooks referencing deleted calculated fields*'.

Note: Where the calculated field is listed in the table below this means it has either been replaced with a respective Data Warehouse column or removed for the reason provided in the 'Additional Information' column.

Changes in the New Release

Common Calculated Fields migrated

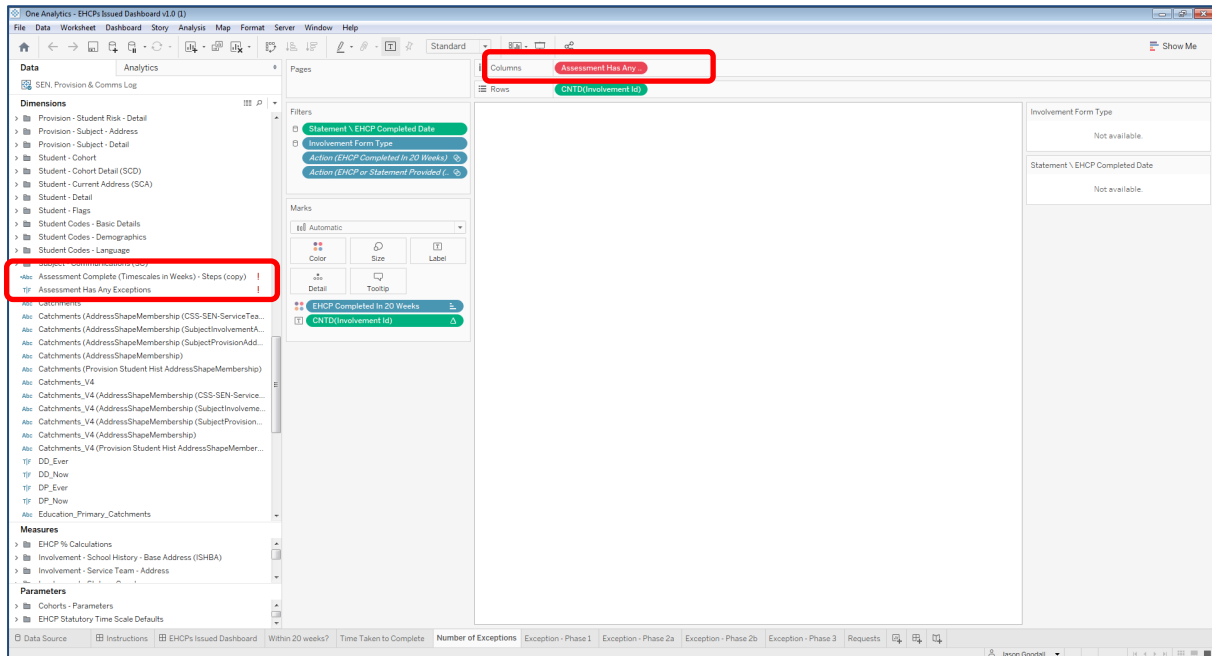
'Common Calculated Fields' as documented above evaluate information in 'Core' dimensions, such as 'Person', 'Student' and 'Date', and therefore could exist within multiple Data Sources multiple times.

To simplify the release documentation each reference has not been provided but the detail of the new Data Warehouse field.

Data Warehouse Information	Example of CF Replaced by DW Field Name	Additional Information
Dimension: Date Column: Day	SEN – 'SEND \ EHCP - Assessment - Request Date - Academic Year Day No.' Attendance – 'Day No (AD)'	The new DW field replaces the need to calculate the 'Day' part of a date value. E.G. '18/10/2018' date value would have a transformed value of '18'. The field names within Data sources have been kept the same and their location.
Dimension: Person Column: Full_Name_Id	SEN – 'Full Name (Id) (Assessment Education Welfare Officer)' CSS – 'Full Name (Id) (CSS Linked Person)'	The new DW field replaces the concatenation of the 'Surname', 'Forename' and 'Id'
Dimension: Student Column: CLA_Now	All Student DS's - CLA Now (Student - Flags)	The new DW field evaluates if there is an 'open' CLA record at the time of processing the ETL routine. As the DS field name denotes the field can be found within the 'Student – Flags' folder in all Student related data sources.
Dimension: Student Column: CSS_Involvement_Ever	CSS - CSS Involvement Ever (Student - Flags)	A calculated field that was previously only available within the CSS Involvement, Activity and Provision Data Source has been migrated to the DW and is now available within all Student related data sources. As the DS field name denotes the field can be found within the 'Student – Flags' folder in all Student related data sources.
Dimension: Student Column: Subject_of_Involvement_Ever	CSS, Activity & Provision - Subject of Involvement Ever (People - Detail) A&T - Subject of Involvement Ever (Student - Flags)	A calculated field that was previously only available within the CSS Involvement, Activity and Provision Data Source has been migrated to the DW and is now available within all Student related data sources. For data sources CSS, Activity & Provision the DS Field can be found as in the 'People – Detail' folder and for all other Student DS's the field is in the 'Student – Flags' folder.

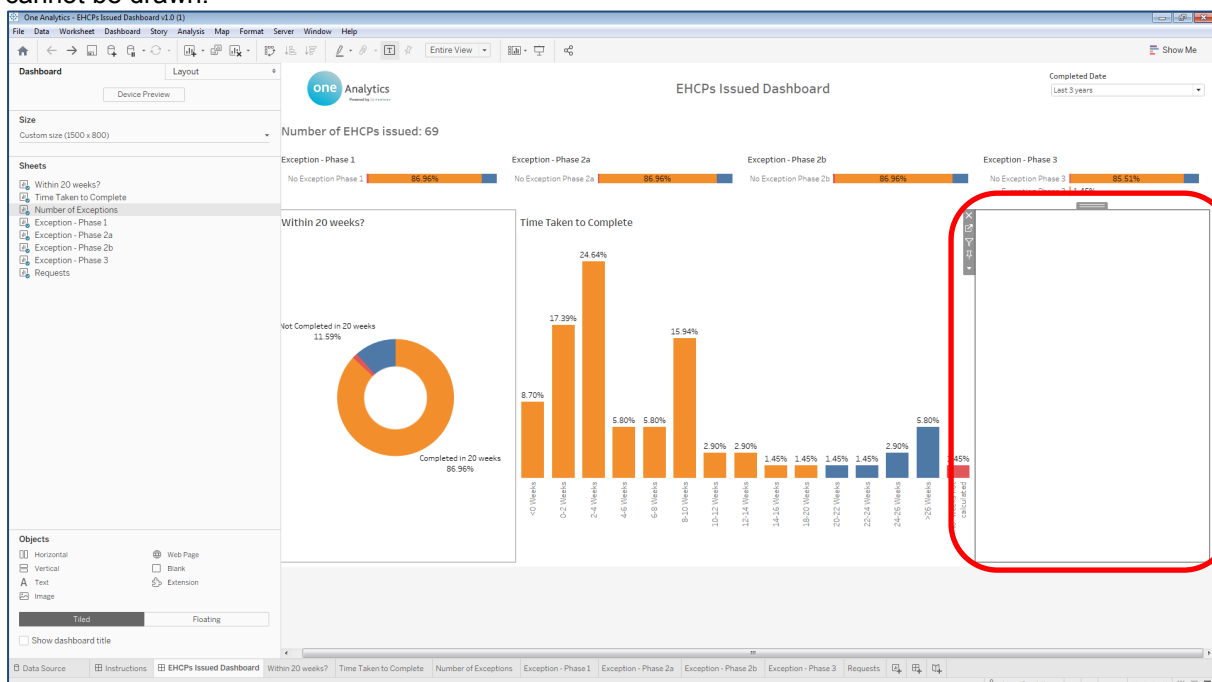
How to fix up workbooks referencing deleted calculated fields

If there are workbooks which have used the deleted calculated fields the below screen shot displays how this would look. To resolve the issue the field will need to have the references replaced which is further documented below.



As can be seen in this visualisation field 'Assessment Has Any Exceptions' is showing in a red colour meaning it is invalid and, in this instance, it is because the calculated field has been deleted from the Data Source. Additionally, in the 'Dimensions' panel the field is not showing within a folder and has an exclamation icon next to it.

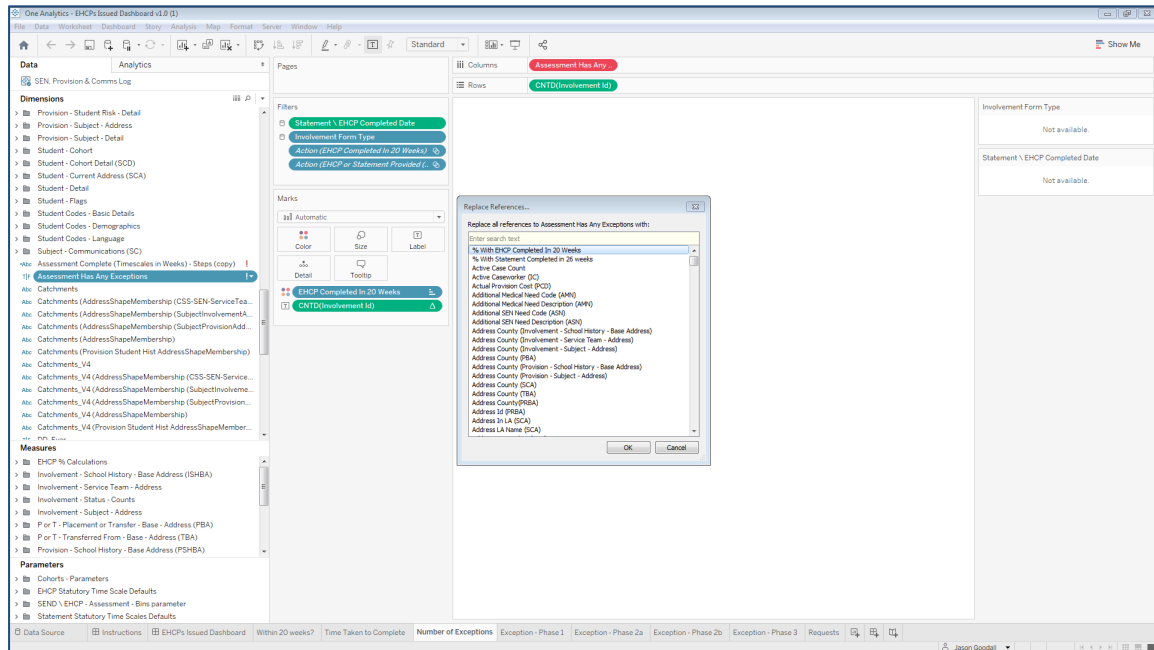
Where the visualisations have been used in a dashboard, there will be blank white space where the visualisation was placed, as noted above this is because there is now an invalid field and the viz cannot be drawn.



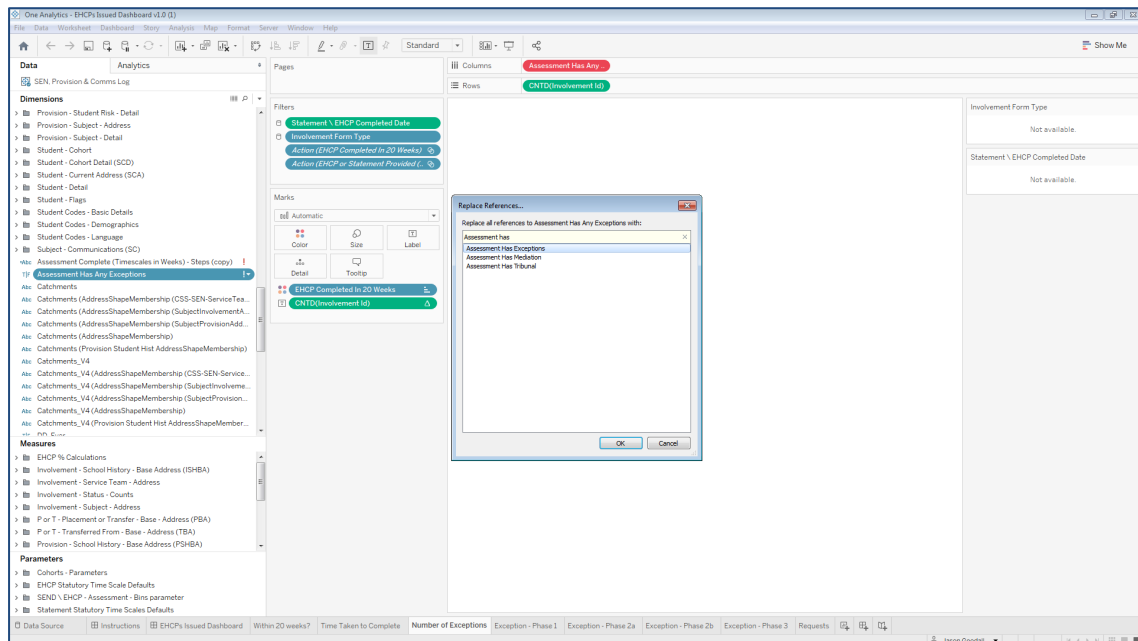
Changes in the New Release

To correct any affected visualisations please follow the documented steps below.

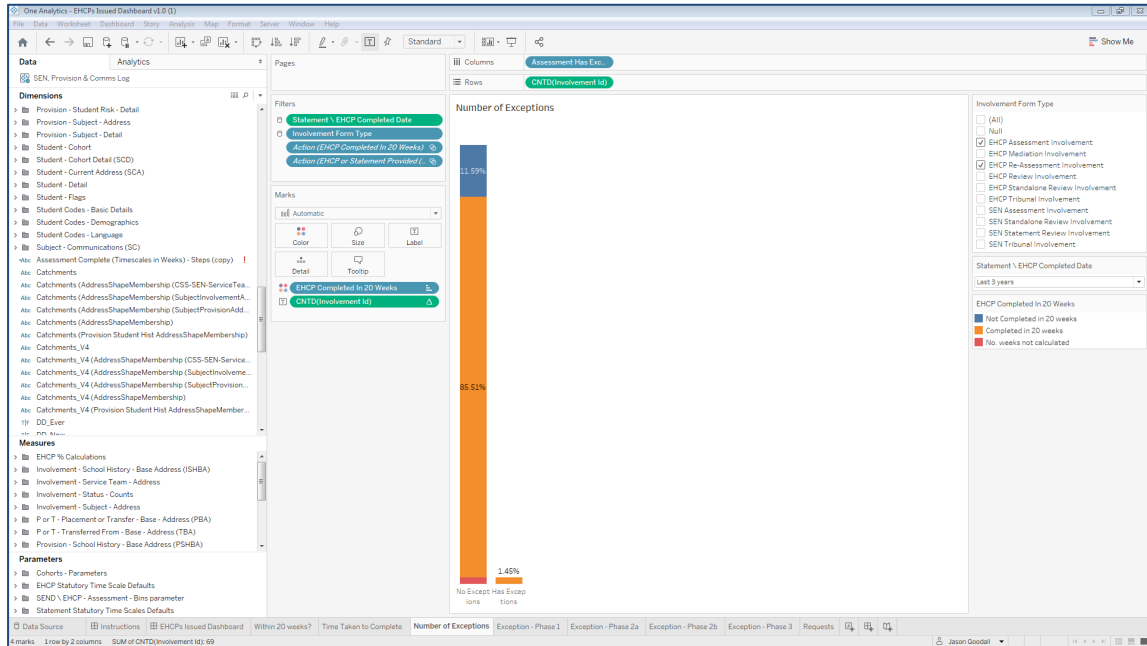
1. Right click on the invalid calculated field and select 'Replace References'.



2. Find the field which has replaced the calculated field using the table provided above, in this case field 'Assessment Has Exception' has replaced the calculated field, then select 'OK'.



- One Analytics Tableau will now, as the option suggests, replace any references of the invalid field to the field selected and correct the visualisation to be appropriately displayed. The invalid field may also be removed from the workbook at this point. If it is not, then right click on the field and select 'Delete'.



If the content has been published and therefore is accessible via One Analytics Server, then at this point it would be necessary to re-publish the Workbook to ensure it can be viewed online without any issues.

Resolved and Known issues

Resolved Issues

Admissions & Transfers - Applications were not imported due to incorrect duplication check

Prior to A&T Applications being imported to the 'ApplicationDetail' dimension there are series of validation checks to ensure duplicate records are not inserted which could negatively affect visualising A&T information.

One of the validations was incorrect, and so student applications were not imported where the student had multiple Exclusion records associated to them. The validation logic has been corrected and all other validations reviewed to ensure all applications are appropriately imported.

Known Issues

Admissions & Transfers – Cannot visualise withdrawn preferences

Where an A&T application has been withdrawn the actual application can be visualised but due to the way in which the information is stored for the withdrawn preference record within One Education source the preference record currently cannot be visualised.

This issue is currently under investigation and will be targeted to be resolved within a future release.

Admission & Transfers – Potential for 'Data Error' when populating records into the 'PreferenceBands' dimension

Where an 'ALT' file has been imported from another Local Authority this could contain banding information, and so when imported to A&T back office the banding details are populated differently to how band records are created for home LA preferences. As a result, the error noted below could be recorded in the diagnostic tool for 'PreferenceBand' records.

The data issue found is currently under investigation to fully understand how the data is managed where Admissions information is imported to ensure the error is not reported but all required information is available within the A&T model.

The issue will be target for a future release of One Analytics.