



# One Analytics Release Notes

February 2019

**CAPITA**

## Revision History

Version	Published on
February 2019 - 1.0	06/03/2019

© Capita Business Services Ltd 2019. All rights reserved. No part of this publication may be reproduced, photocopied, stored on a retrieval system, translated or transmitted without the express written consent of the publisher. Microsoft® and Windows® are either registered trademarks or trademarks of Microsoft Corporation in the United States and/or other countries.

[www.capita-one.co.uk](http://www.capita-one.co.uk)

## Contacting One Application Support

You can log a call with One Application Support via the Customer Service tool available on [My Account](#).

## Providing Feedback on Documentation

We always welcome comments and feedback on the quality of our documentation including online help files and handbooks. If you have any comments on any aspect of our documentation, please email:

[onepublications@capita.co.uk](mailto:onepublications@capita.co.uk)

Please ensure that you include the document name, version and aspect of documentation on which you are commenting.



# Contents

<b>Document Purpose</b> .....	<b>1</b>
<b>Upgrading the Software</b> .....	<b>2</b>
Compatibility with Capita One .....	2
Compatibility with Tableau .....	2
Software Distribution .....	2
<b>Changes in the New Release</b> .....	<b>3</b>
Updated Data Sources.....	3
Resolved and Known issues.....	8



## Document Purpose

These release notes are provided to users to detail the enhancements and resolutions included with the One Analytics February 2019 release. Each release contains all fixes and enhancements issued since the previous release. Instructions for downloading the latest release installation media are also included.

Should you have any questions about the implementation, testing, or user impacts of the changes listed in this document, please contact the One Application Support Team.

## Upgrading the Software

### Compatibility with Capita One

The One Analytics February 2019 release is designed to be compatible with the following versions of the Capita One system:

- 3.65
- 3.66
- 3.67

If you are running an older version of Capita One, we recommend that you upgrade to at least the 3.65 release prior to installing this update.

### Compatibility with Tableau

The One Analytics February 2019 release is designed to be compatible with Tableau 10.5.

### Software Distribution

The One Analytics February 2019 release is available as a download only. Links to the self-extracting installation files are included below. One Co-ordinators will be emailed with the password to enable them to unzip the installation media.

The installation files for the One Analytics February 2019 release is available via the following link:

<http://dl.capitasolus.co.uk/onedownloads/OA-2019-Feb.exe>

# Changes in the New Release

## Updated Data Sources

The following data sources have been updated in this release as a result of calculated fields being migrated to the Data Warehouse:

- SEN, Provision & Comms Log
- Attainment
- Admissions & Transfers

The changes are documented in the sections below.

### New Functionality: Tableau Calculated Fields migrated to the Data Warehouse

#### Calculated Fields migration to One Analytics Data Warehouse

The February 2019 release continues the focus of migrating tableau calculated fields to the One Analytics Data Warehouse to improve performance and simplify the models due to being extensively used within data sources.

The scope of the February release is noted below.

- Migrate and remove CF's not required within the Admissions & Transfers DS
- Review Attainment Model

The calculated fields migrated or removed are listed below and where they can be found within the models.

Where the Calculated Field has been migrated, they will have been deleted from the Data Source, therefore if they have been used within workbooks the references to these fields will need to be replaced, and which is documented in section '*How to fix up workbooks referencing deleted calculated fields*'.

**Note:** Where the calculated field is listed in the table below this means it has either been replaced with a respective Data Warehouse column or removed for the reason provided in the 'Additional Information' column.



## Changes in the New Release

### Admissions & Transfers Calculated Fields migrated

Documented below are calculated fields that have been migrated to the Data Warehouse for the Admissions Model and where required further detail given in the 'Additional Information' column.

DS Calculated Field Name	Replacement DW Field Name	DS Folder	Additional Information
Age at Application (Years) (Application – Student)	Age at Application (Years)	Application - Detail	The age of the student on the date of the application was being rounded up by Tableau. Where the students age was '13.5' years Tableau provided the value of 14 which is incorrect as this should have been displayed as 13, this is now corrected in the new DW filed.
Age at Application (Years/Months) (Application - Student)	Age at Application (Years/Months)		
Application Entry Method Description	No name changes.		
Preference 1 Base			
Preference 2 Base			
Preference 3 Base			
Preference 4 Base			
Preference Count - Bins		The logic for this field has been slightly updated and so where an application does not have any preferences associated with it the value 'No Prefs' is provided.	
Excluded at Application			
CLA at Application	No name changes.	Application - Flags	
EWO at Application	No name changes.	Preference - Detail	
No. Available School Places	No name changes.	Transfer Group Detail	This field is to be used as a dimension and provide the no. available places at row level for a data grid. Should there be the need to aggregate this value please use field 'No. Available School Places – Measure' in the measures area.
Receiver School Oversubscribed			
Priority 1			
Priority 2			
Priority 3			
Priority 4			
Full Name (Applicant)	No name changes.	Applicant	

### Admissions & Transfers Calculated Fields deleted

There were a several calculated fields within the Admissions data source that provided information which was deemed to provide information that would not be used, reduced performance of the Model and as a result have been removed from the Data Source.

For the affected fields the calculated field name and data source folder location have been below

Field Name	DS Folder Location	Additional Information
Age at Application AY Start (Years) (Application - Student)	Student - Detail	Providing the Age and NCY information at the start of the Academic Year for the Application Date application would not provide insightful information and as such removed from the model.
Age at Application AY Start (Years/Months) (Application - Student)		
Age at AY Start - (Years) (Application - Student)		

Age at NCY Start - (Years) (Student)		
NCY at Start of Application NCY (Application - Student)		
Application Month and Day	Application - Date	The Application date can be expanded using Tableau built in date functionality to obtain the Month and day information, and therefore an additional field is not required to provide this information.
Represented By Other - Text (Appeal)	Appeal - Detail	The value 'Attended' or 'Not Attended' by evaluating the value of field 'Represented By Other - Boolean (Appeal)'. Whether an individual was represented by someone else or not does not infer their physical attendance of the meeting and so this field has been removed.
Appeal month and day		The Appeal date can be expanded using Tableau built in date functionality to obtain the Month and day information, and therefore an additional field is not required to provide this information.

**Attainment Calculated Field deleted**

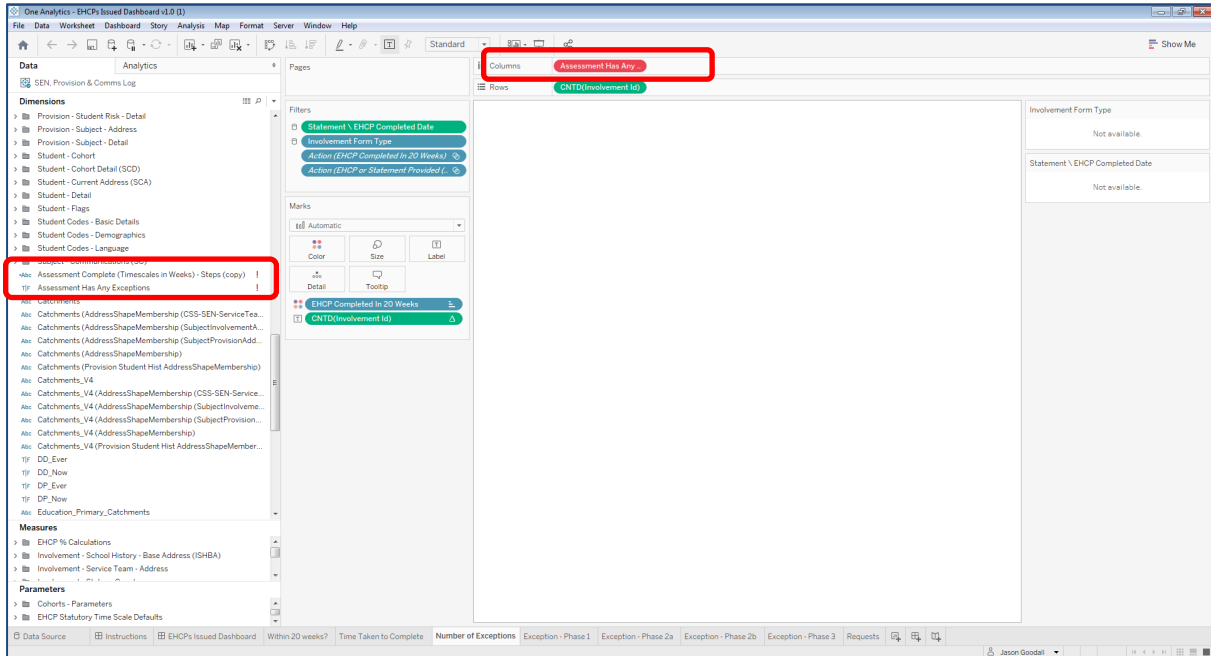
1 calculated field was deleted from the Attainment model as described below.

Field Name	DS Folder Location	Additional Information
Result Date month and day	Attainment – Result - Date	The Result date can be expanded using Tableau built in date functionality to obtain the Month and day information, and therefore an additional field is not required to provide this information.

## Changes in the New Release

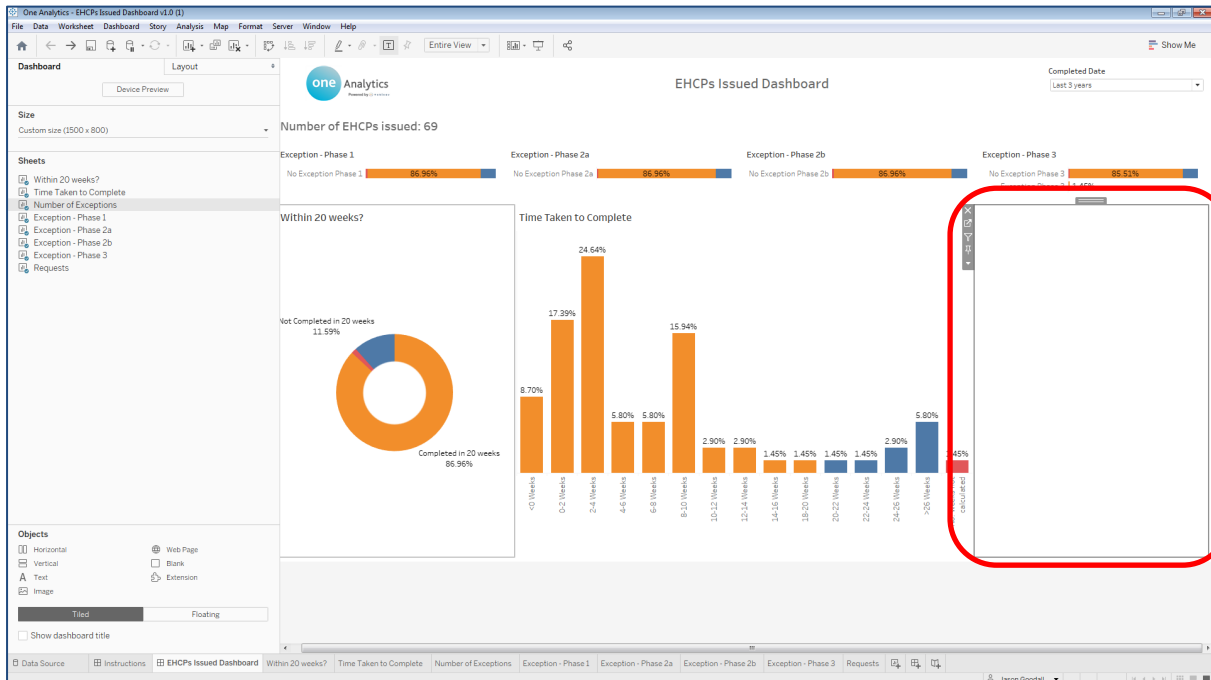
### How to fix up workbooks referencing deleted calculated fields

If there are workbooks which have used the deleted calculated fields the below screen shot displays how this would look. To resolve the issue the field will need to have the references replaced which is documented below.



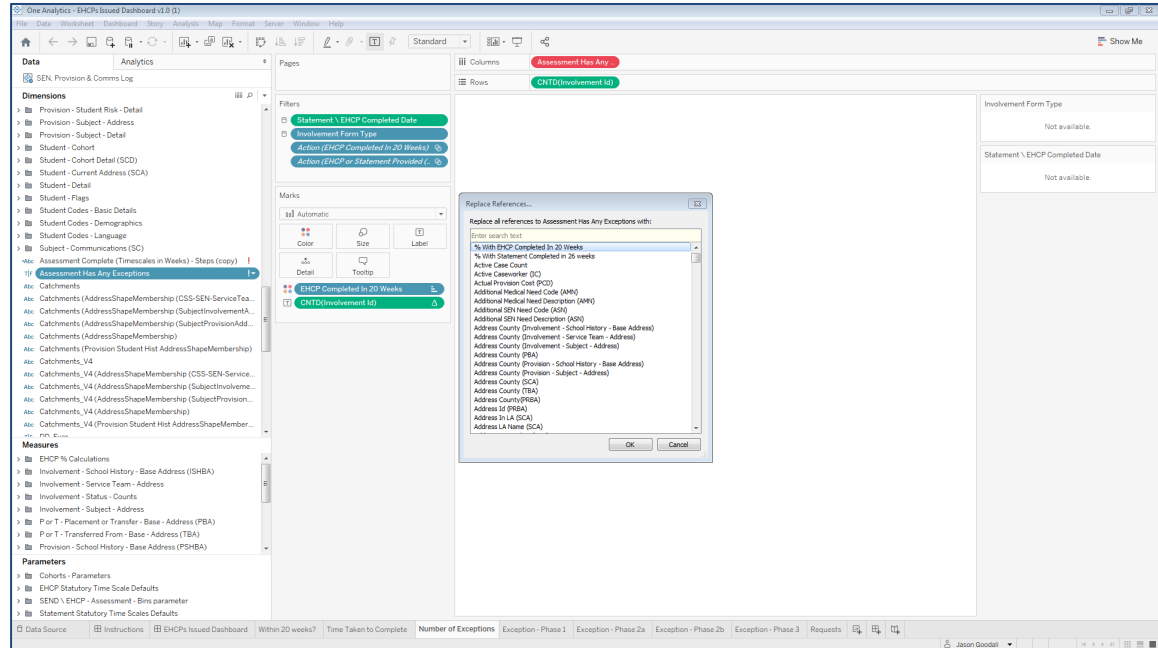
As can be seen in this visualisation field 'Assessment Has Any Exceptions' is showing in a red colour meaning it is invalid and, in this instance, it is because the calculated field has been deleted from the Data Source. Additionally, in the 'Dimensions' panel the field is not showing within a folder and has an exclamation icon next to it.

Where the visualisations have been used in a dashboard, there will be blank white space where the visualisation was placed, as noted above this is because there is now an invalid field and the viz cannot be drawn.

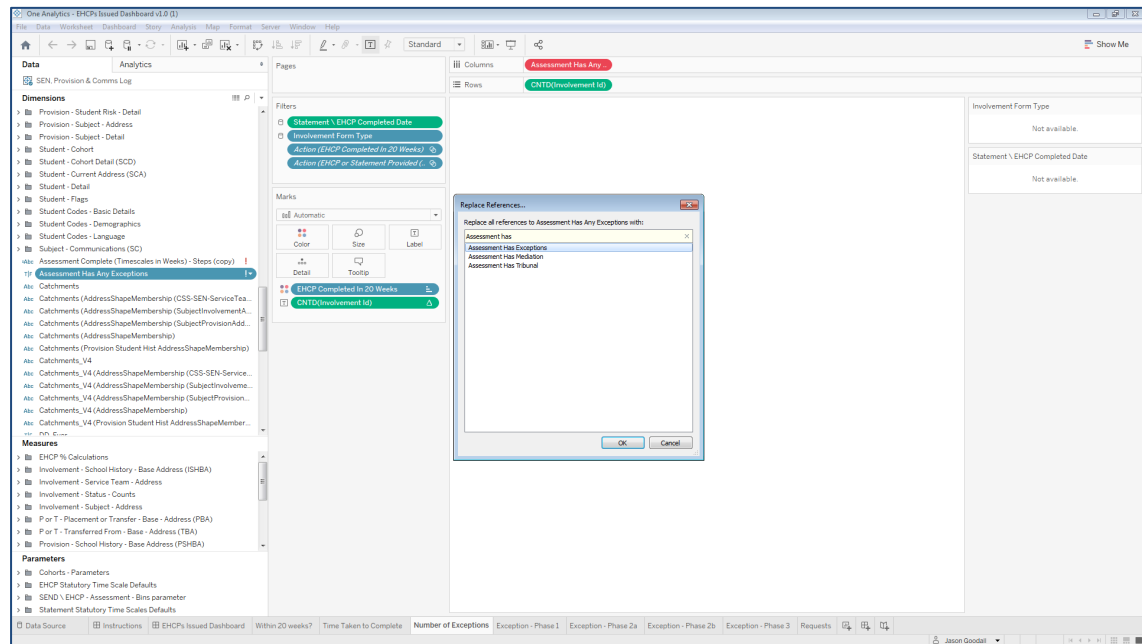


To correct any affected visualisations please follow the documented steps below.

1. Right click on the invalid calculated field and select 'Replace References'.

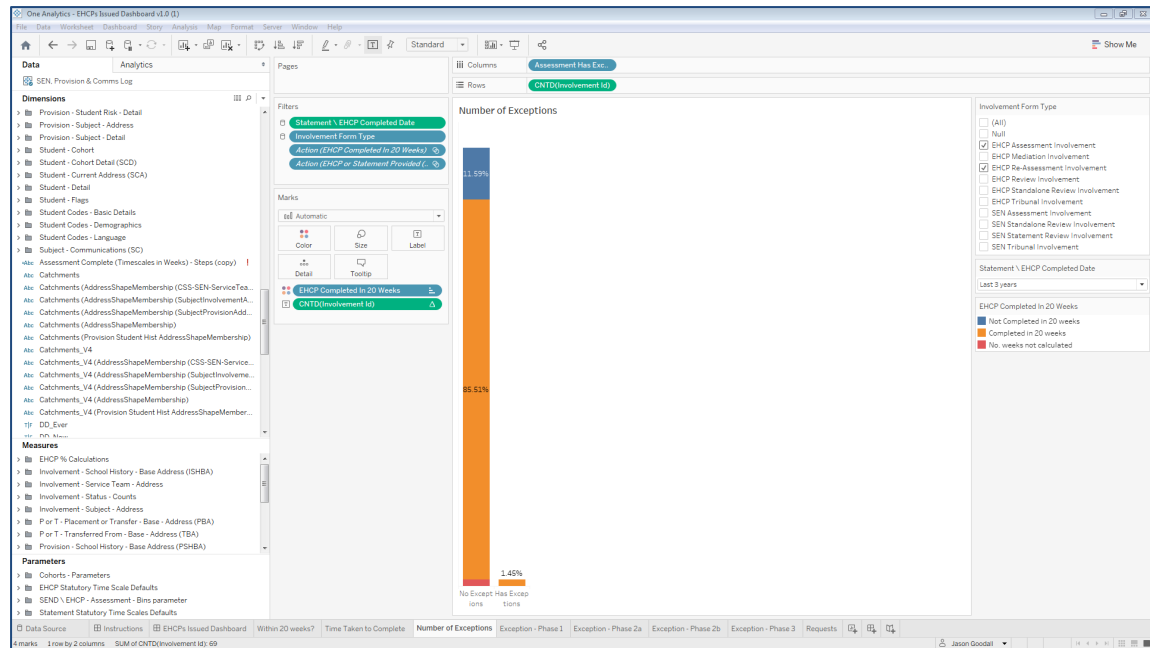


2. Find the field which has replaced the calculated field using the table provided above, in this case field 'Assessment Has Exception' has replaced the calculated field, then select 'OK'.



3. One Analytics Tableau will now, as the option suggests, replace any references of the invalid field to the field selected and correct the visualisation to be appropriately displayed. The invalid field may also be removed from the workbook at this point. If it is not, then right click on the field and select 'Delete'.

## Changes in the New Release



If the content has been published and therefore is accessible via One Analytics Server, then at this point it would be necessary to re-publish the Workbook to ensure it can be viewed online without any issues.

## Resolved and Known issues

### Resolved Issues

#### SEN, Provision & Comms Log – Logic to calculate whether the Student is CLA at time of Assessment incorrect

The CLA History of a student is evaluated for each assessment and the system was taking the minimum 'Start Date' and Maximum 'End Date' to assess whether the student had an open CLA History record on the Assessment Request Date. This was incorrect as the system should be evaluating the 'Start' and 'End' date for each CLA History record and whether an assessment occurred during this period and from the Earliest 'Start Date. and latest 'End Date'.

The business logic has been reviewed and corrected to ensure the records are populated correctly.

With regards to Assessments that may have been deleted from One Education, these will not get updated based on the corrected logic, and as such the steps provided below should be followed to insure this is accurate based on the information held within the One Analytics Data Warehouse.

To ensure the values are correctly populated there is the need to process SQL script '*Populate\_CLA\_At\_Time\_Of\_Assessment\_For\_Deleted\_Records.sql*' manually, please follow the instructions below to ensure values are populated for these records.

**Note:** We advise this process is executed by a SQL DBA and that adequate backups have been taken.

The script noted in the steps below will exist within folder location 'SQL Scripts\ Release Scripts' for where One Analytics has been deployed and should be processed against the One Analytics Data Warehouse. E.G. C:\One Analytics\SQL Scripts\Release Scripts'

1. Open SQL Management Studio and connect to the One Analytics Data Warehouse.
2. Open sql file '*Populate\_CLA\_At\_Time\_Of\_Assessment\_For\_Deleted\_Records.sql*' from the install location of One Analytics and execute the script.

The output of processing the SQL will state how many records have been updated.

**KB-479907 - OA When a Null value is found in any name value, the system does not provide a value at all within visualisations**

The Full Name (Id) field was migrated to the One Analytics Data Warehouse in the January 2019 release but was formally missed for the release notes.

The field will be populated as noted below and depending on which name field is blank, note the comma is kept in the field value to understand what name value is blank but this would be inferred to some degree by the value displayed.

- Both Surname and Forename fields populated - 'Smith, James (1234)'
- Surname value is blank', James (1234)'
- Forename field is blank 'Smith, (1234)'
- Both values are blank '(1234)'